

# FAU Wireless Configuration for MS Windows XP SP3

**NOTE:** These instructions are for configuring wireless connections with Windows configuration utility only. Other wireless configuration utilities that may be included with laptops are not supported in this document.

**NOTE:** Make sure wireless networking is active. Many laptops have a switch on the side of the computer that turns wireless functionality On or Off.

## Step 1

---

- Left-click on the Start button.
- Select Control Panel
- Select Network Connections

## Step 2

---

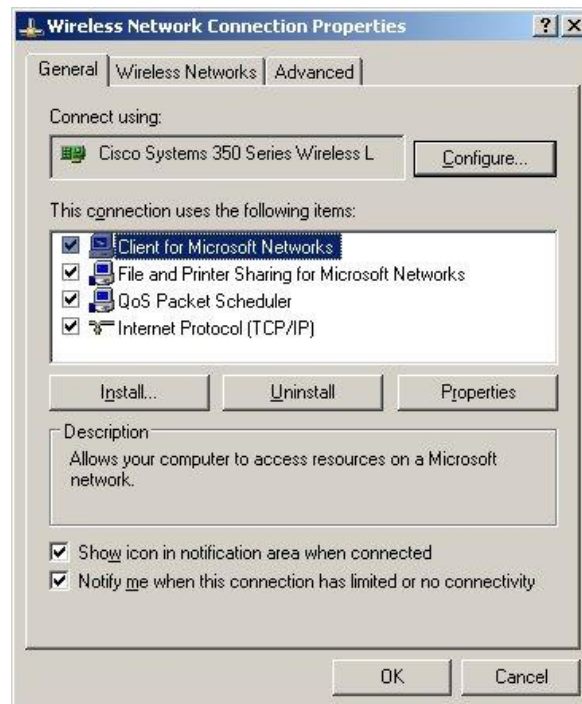
- Right-click on Wireless Network Connection to display a menu.



## Step 3

---

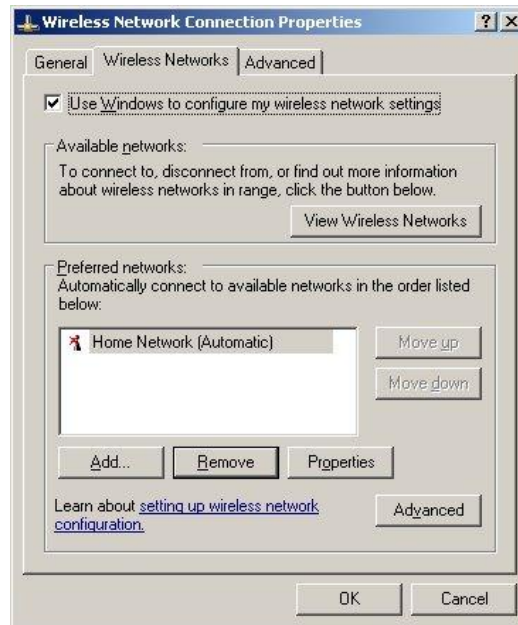
- Select Properties menu item to open Wireless Network Connection Properties window.



## Step 4

---

- Select “Wireless Networks” tab.

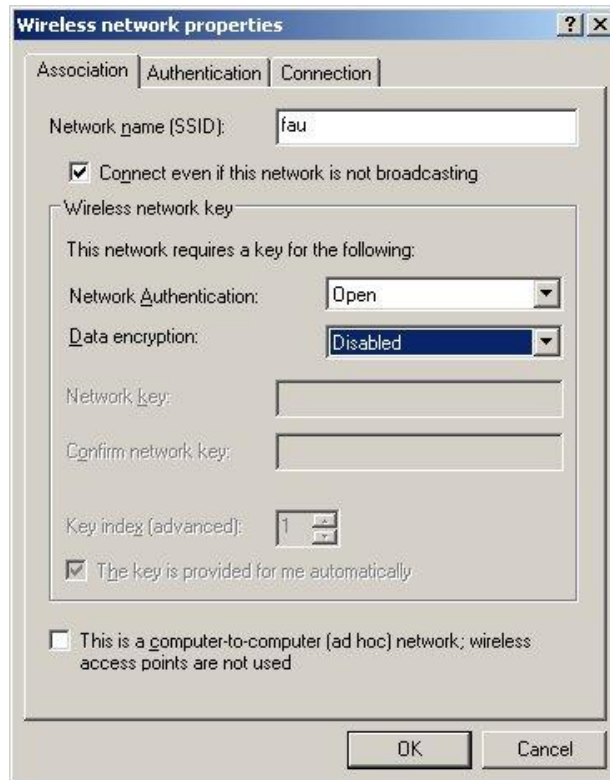


- Make sure “Use Windows to configure my wireless network settings” is checked. If this is not checked, a wireless configuration utility other than Windows is likely active.

## Step 5

---

- Select "Add" to open "Wireless network properties" window.

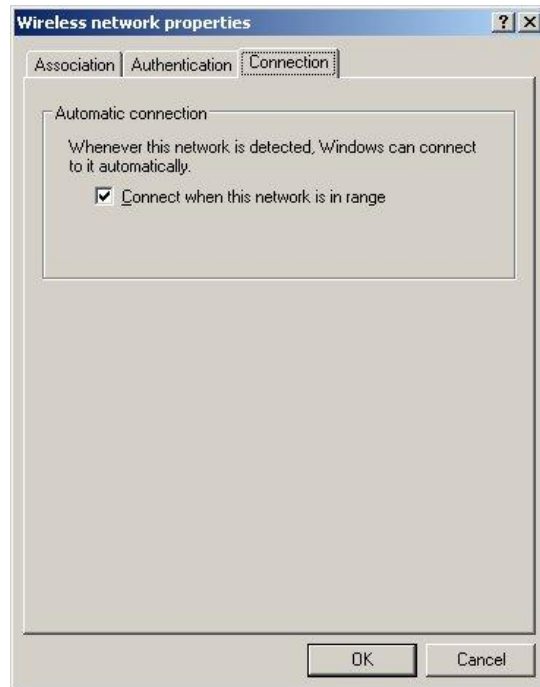


- Select following options (as seen in the picture above):
  - Network name (SSID): **fau** (MUST BE IN LOWERCASE)
  - Connect even if this network is not broadcasting: **Checked**
  - Network Authentication: **Open**
  - Data Encryption: **Disabled**
  - Do not check "This is a computer-to-computer (ad hoc) network; ..."

## Step 6

---

- Select "Connection" tab.
- Make sure "Connect when this network is in range" is checked.



## Step 7

---

Warning will display.

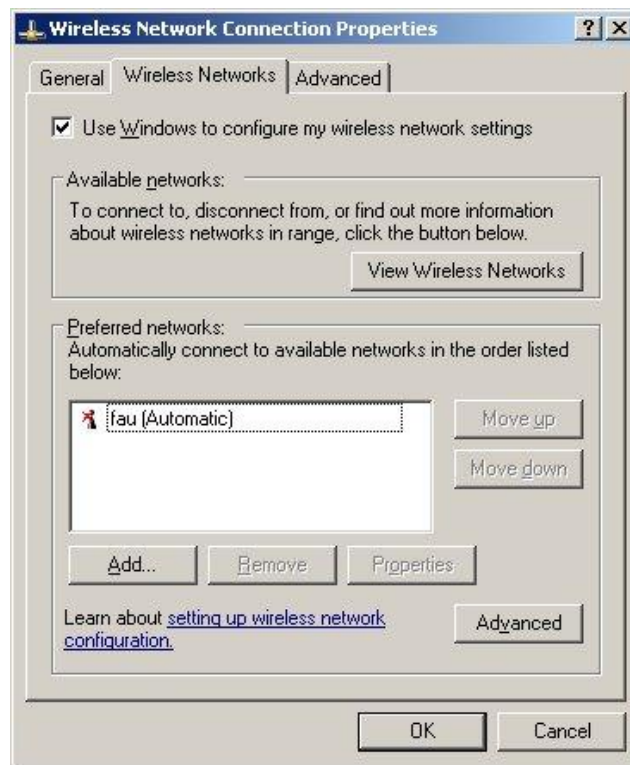
- Select Continue Anyway at disabled encryption warning.



## Step 8

---

- Select OK to close the Wireless Network Connection Properties.



## Step 9

---

- Wait as the wireless connection is established. Wireless connection icon may be present in the bottom right of the screen indicating connection status.
- After the computer is connected to the wireless network, open a browser (such as Internet Explorer or Mozilla FireFox).
- Login prompt will present. Login with your network username and password.

If you are experiencing difficulties in setting up your device, you may visit following locations to have your device configured:

- Boca Raton – CM 22, 138
- Davie – LA 49, 303E
- Fort Lauderdale – HE 05, 611 or 810
- Jupiter – SR 03, 284
- Port St. Lucie – CO 02, 223 or MP 06, 222