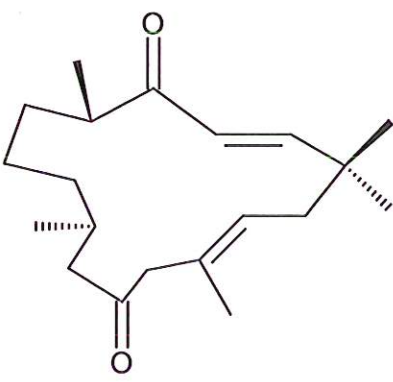


HBOI-379	AND Enantiomer
	
CEMBRANE	
$C_{20}H_{32}O_2$	304.47
<i>Bebryce</i> sp.	

Isolation scheme (Visio) attached

HPLC method (trace attached)

Method: Vydac C18 Protein and Peptide, 4.6 x 250mm, 10 μ
 flow 1 ml/min, detection: PDA: UV (extracted at 220 nm, black); ELSD (green dotted)
 A: H₂O:CH₃CN (95:5, v/v), B: CH₃CN
 t=0 min A:B (90:10, v/v), t=20 min (100%B) , t=28 min (100%B)

LC-MS method

Method: Vydac C18 Protein and Peptide, 2.1x150 mm, flow 0.2 ml/min
 A: H₂O (0.1% formic acid), B:CH₃CN (0.1% formic acid)
 t= 0 min A:B (90:10, v/v), t=15 min (100%B), t=21 min (100%B), t=22 min A:B(90:10, v/v)
 using a linear gradient

¹H (600 MHz) CDCl₃ CD₃OD (Methanol-d₄) CDCl₃/CD₃OD

¹³C (150 MHz) CDCl₃ CD₃OD (Methanol-d₄) CDCl₃/CD₃OD

Solubility CHCl₃/MeOH (9:1) MeOH DMSO

Estimated purity >90%

Sample weight 19.7 mg

For further information contact:

Amy E. Wright, PhD, HBOI@FAU, 5600 US 1, North, Fort Pierce, FL 34946
awrigh33@hboi.fau.edu, 772-242-2459

Date: 7/15/13

10-X-03-1-006
 Bebryce
 100g extracted/ 244g remain
 ROBL26-72-1 Crude 2.4g

EtOAc Partition
 ROBL26-72-2
 468.7mg

Water Partition

Water Partition
 ROBL26-72-3
 1.86g

BuOH Partition
 ROBL26-72-4
 52.6mg

15.5g RP 18 Gold Combi- Flash Column 450mg	ROBL26-74- Tubes Weight (mg)	1 1-4 1.7	2 5-7 3.7	3 8-10 0.6	4 11 0.5	5 12-16 3.4	6 17-64 35.4	7 65-71 18.1
		8 72-79 14.3	9 80-81 4.4	10 82-99 114.4	11 100-142 83.1	12 tfa wash 4.5	13 DCM/MeOH wash 91.9	

15.5g RP 18 Gold Combi- Flash Column 100 mg	SEN31-38- Tubes Weight (mg)	1 1-77 8.1	2 78 1.7	3 79-80 4.0	4 81 7.2	5 82-83 25.4	6 84-86 19.2	7 87-91 8.7
		8 92-95 2.7	9 96-109 3.9	10 TFA wash 0.9	11 DCM/MeOH wash 0.9			

SEN31-38-N

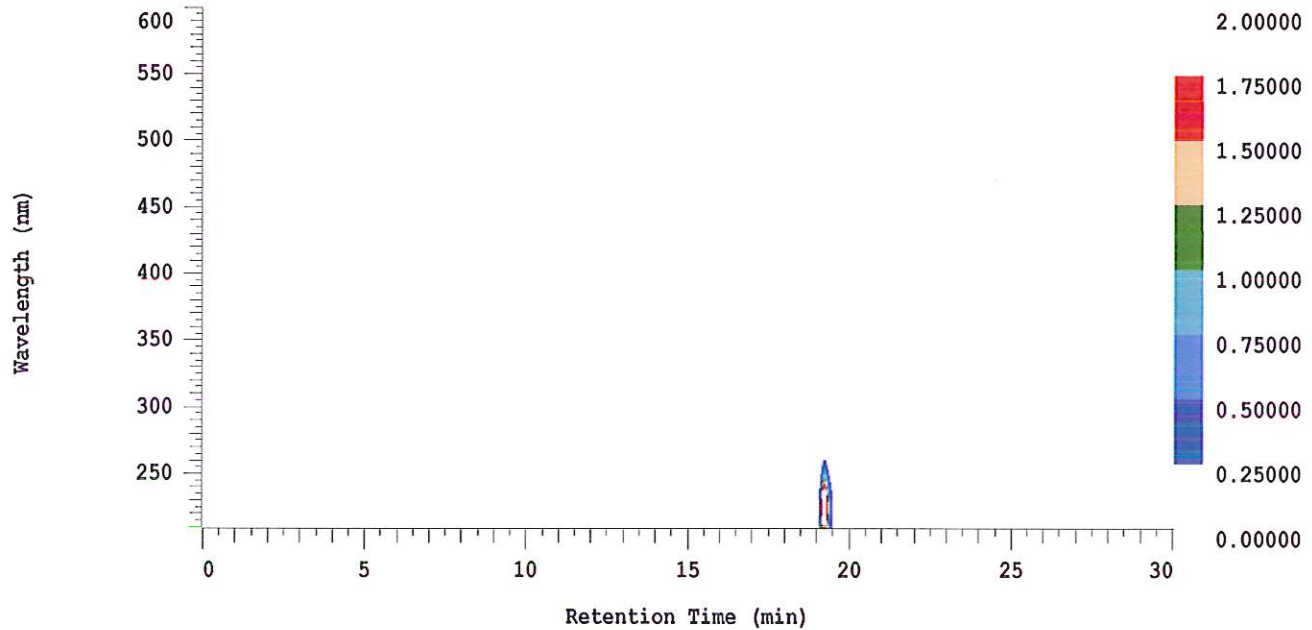
D-2000 Elite HPLC System Manager Report

Analyzed: 06/28/2013 02:28 PM

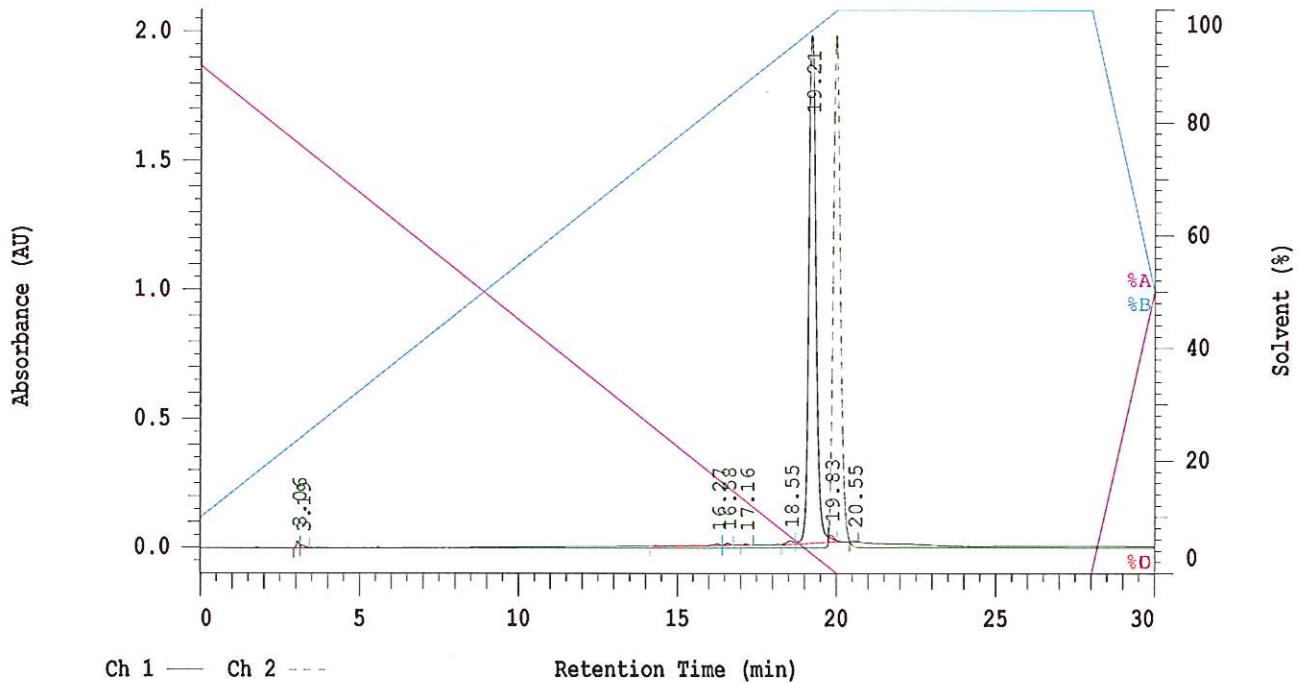
Reported: 06/28/2013 04:02 PM

Sample Name: HBOI-379

Sample Description: HBOI-379 Bebryc Cembrane



Channel 1 Chrom Type: Fixed WL Chromatogram, 230 nm



Acquisition Method: autosampler_30min_wELSD

Column Type: Vydac C18

Pump A Solvent A: H2O/5% ACN

Pump A Solvent B: ACN

Method Description:

RT: 0.00 - 20.99

