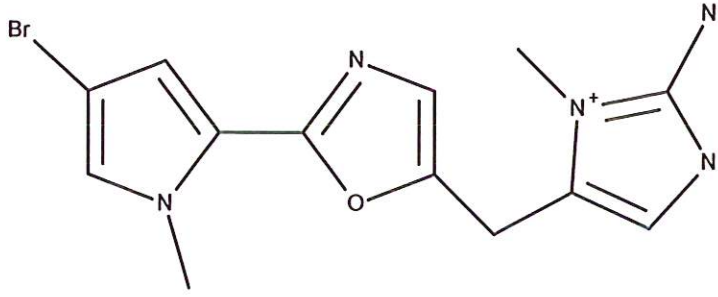


HBOI-365			
BROMO-OXAZOLE			
$C_{13}H_{15}BrN_5O^+$		336.05	
Axinellida			
Manuscript in prep			

isolation scheme (Visio) attached

hplc method (trace attached)

Method: Vydac C18 Protein and Peptide, 4.6 x 250mm, 10 $\mu$   
 flow 1 ml/min, detection: PDA: UV (extracted at 220 nm, black); ELSD (green dotted)  
 A: H<sub>2</sub>O:CH<sub>3</sub>CN (95:5, v/v, 0.1% TFA), B: CH<sub>3</sub>CN (0.1% TFA)  
 t=0 min A:B (90:10, v/v), t=20 min (100%B) , t=28 min (100%B)

LC-MS method

Method: Vydac C18 Protein and Peptide, 2.1x150 mm, flow 0.2 ml/min  
 A: H<sub>2</sub>O (0.1% formic acid), B: CH<sub>3</sub>CN (0.1% formic acid)  
 t= 0 min A:B (90:10, v/v), t=15 min (100%B), t=21 min (100%B), t=22 min A:B(90:10, v/v)  
 using a linear gradient

<sup>1</sup>H (600 MHz)       CDCl<sub>3</sub>       CD<sub>3</sub>OD (Methanol-d<sub>4</sub>)       CDCl<sub>3</sub>/CD<sub>3</sub>OD

<sup>13</sup>C (150 MHz)       CDCl<sub>3</sub>       CD<sub>3</sub>OD (Methanol-d<sub>4</sub>)       CDCl<sub>3</sub>/CD<sub>3</sub>OD

solubility       CHCl<sub>3</sub>/MeOH (9:1)       MeOH       DMSO

estimated purity >90%

sample weight 17.0 mg

For further information contact:

Amy E. Wright, PhD, HBOI@FAU, 5600 US 1, North, Fort Pierce, FL 34946  
[awrigh33@hboi.fau.edu](mailto:awrigh33@hboi.fau.edu), 772-242-2459

Date: \_\_\_\_\_

6-VI-93-1-004  
 Taxonomy: Axinellida  
 166g  
 ASE Dionex extraction  
 3 steps, 100°C

RUSF2-1-1  
 Heptane extract  
 1.36g

RUSF2-1-2  
 EtOAc:EtOH+ EtOH  
 9:1  
 4.64g

RUSF2-1-3  
 MeOH:H2O  
 5:1  
 9.66 g

600 mg run on 30 g RP C18 Rf Gold  
 Column  
 Combi-Flash system

RUSF2-1- weight mg tubes	4 444.5 5-12	5 6.9 13-17	6 25.1 18-22	7 21.1 23-34	8 9.4 35-70	9 29.2 71-74	10 11.5 79-87	11 10.2 WASH
--------------------------------	--------------------	-------------------	--------------------	--------------------	-------------------	--------------------	---------------------	--------------------

RUSF2-1-4  
 70 mg  
 LCMS Purification using a C-18  
 Vydac precolumn with flow rate 15 mL/min  
 (A)H2O/ACN(95/5)0.1%TFA:(B)ACN(0.1%TFA)  
 t=0, A:B (90:10, t=20, A:B (70:30), t=21(100% B),0,t=25(100% B)

RUSF2-3- weight mg peak	1 17.9 1	2 3.1 2	3 15.5 3	4 6.5 4	5 6.4 5	6 8.7 6	7 12.7 7
-------------------------------	----------------	---------------	----------------	---------------	---------------	---------------	----------------

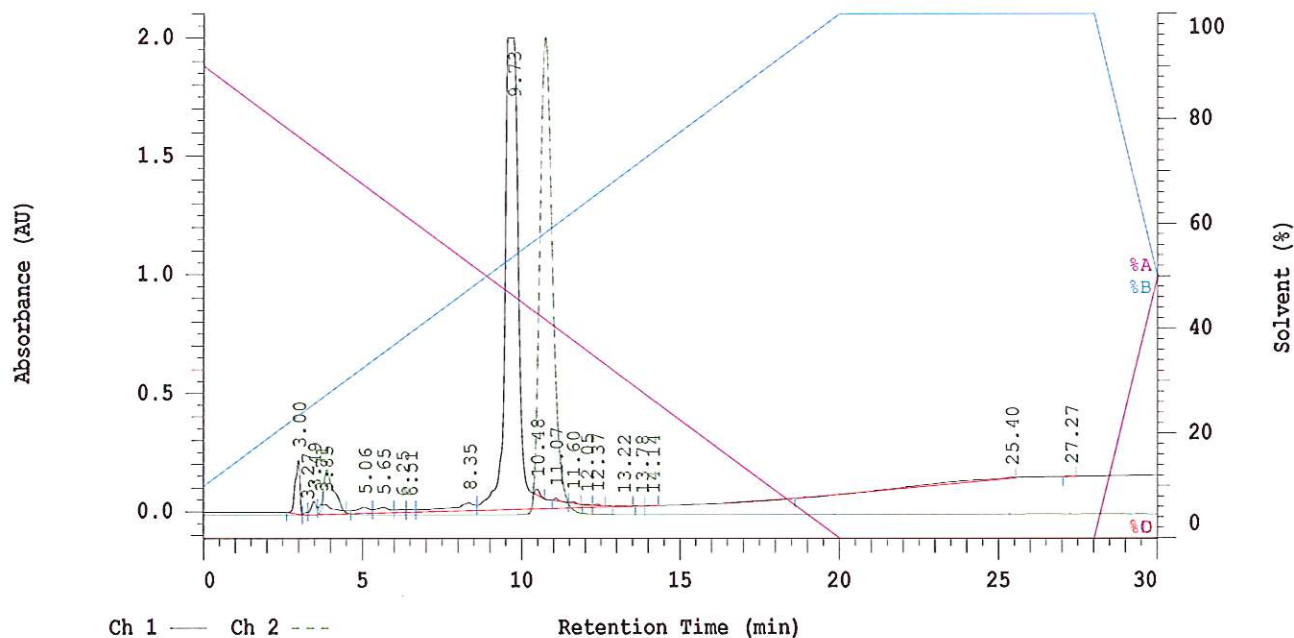
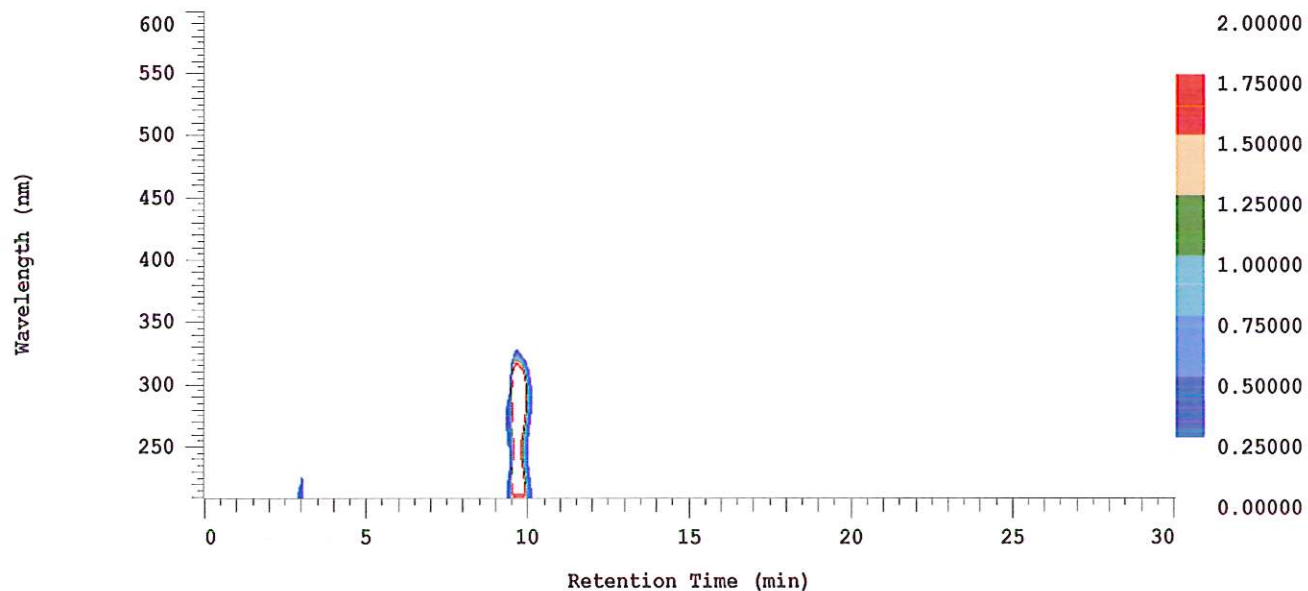
### D-2000 Elite HPLC System Manager Report

Analyzed: 07/08/2013 11:18 AM

Reported: 07/09/2013 08:53 AM

Sample Name: HBOI.365

Sample Description: HBOI.365



Acquisition Method: autosampler\_30min\_wELSD

Column Type: Vydac C18

Pump A Solvent A: H2O/5% ACN

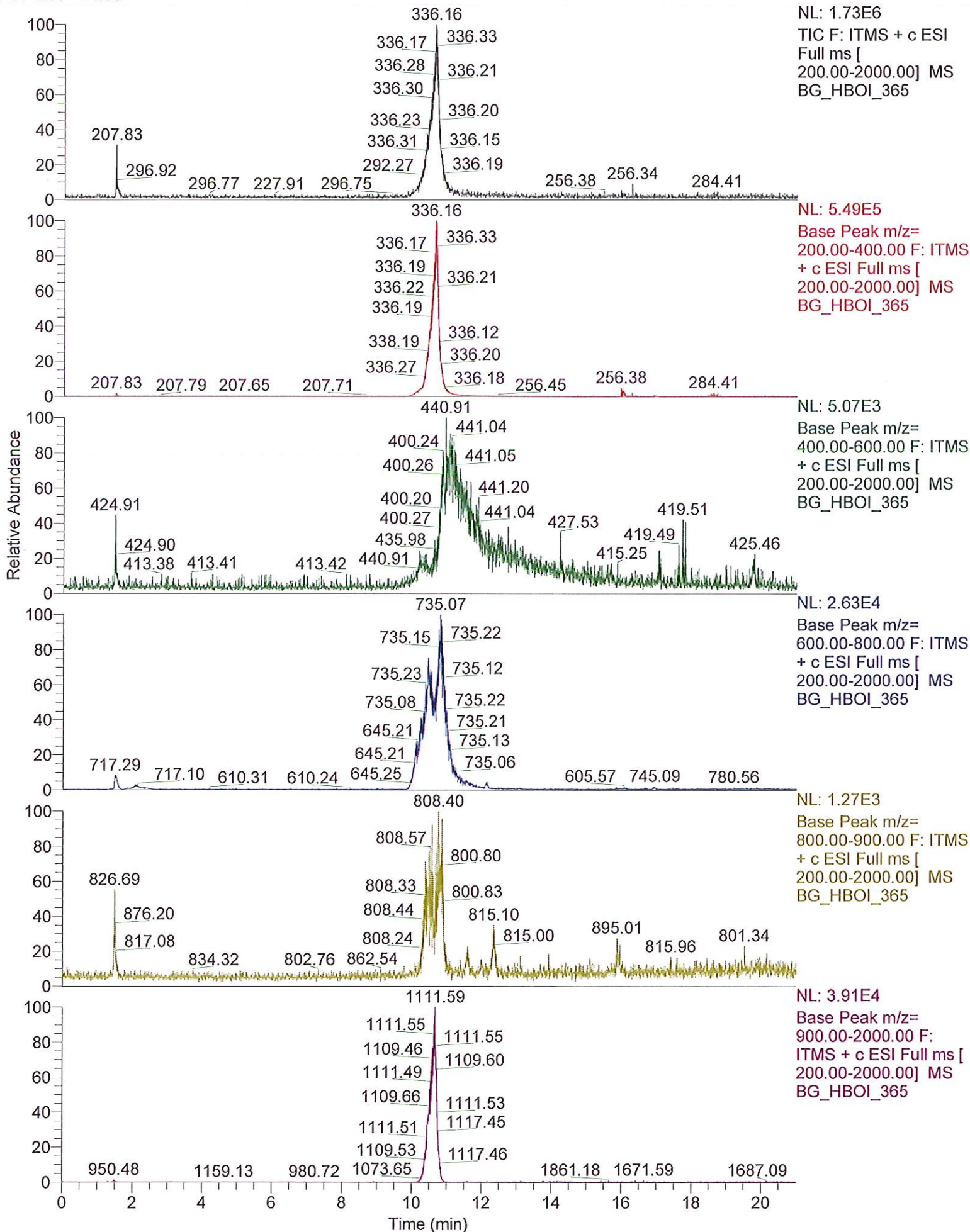
Pump A Solvent B: ACN

Pump A Solvent C:

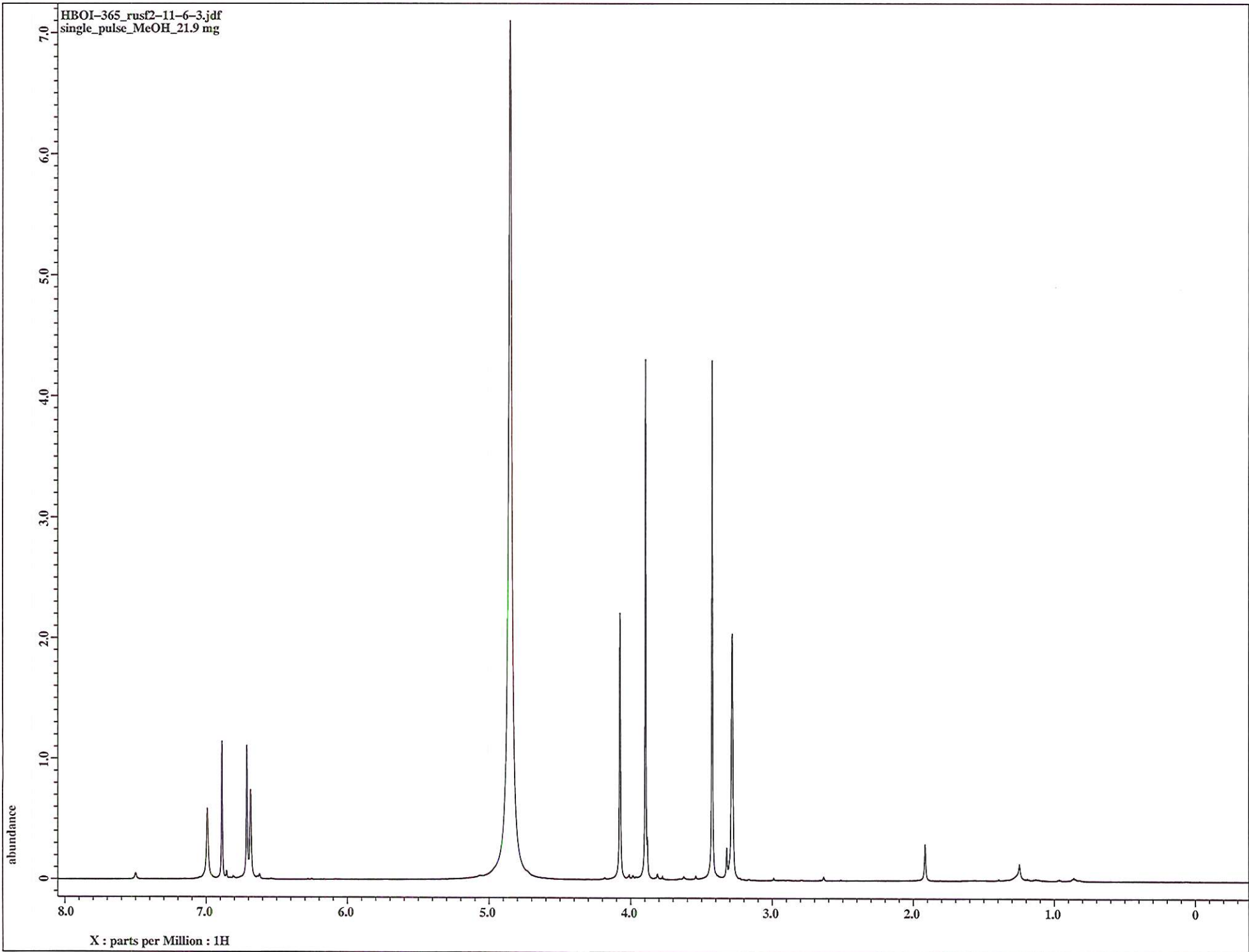
Pump A Solvent D:

Method Description:

RT: 0.00 - 21.00



HBOI-365\_rusf2-11-6-3.jdf  
single\_pulse\_MeOH\_21.9 mg



HBOI-365\_rusf2-11-6-3.jdf  
single pulse decoupled gated NOE\_meOH\_21.9 mg

