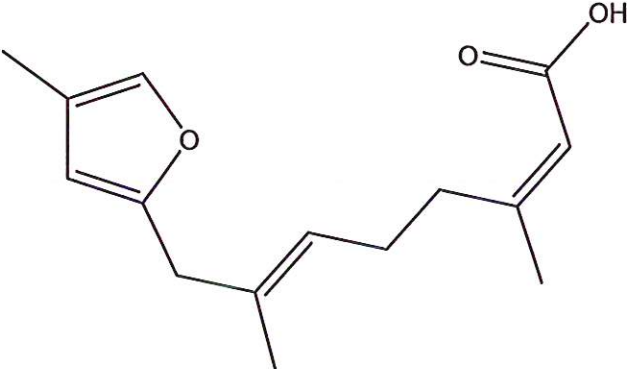


HBOI-353	
MCOO1-38-4 FURAN	
$C_{15}H_{20}O_3$	248.32
Poecilosclerida	

isolation scheme (Visio)

hplc (trace attached)

Method: Vydac C18 Protein and Peptide, 4.6 x 250mm, 10 μ

flow 1 ml/min, detection: PDA: UV (extracted at 220 nm, black); ELSD (green dotted)

A: H₂O:CH₃CN (95:5, v/v), B: CH₃CN

t=0 min A:B (90:10, v/v), t=20 min (100%B) , t=28 min (100%B)

LC-MS (spectrum attached)

Method: Vydac C18 Protein and Peptide, 2.1x150 mm, flow 0.2 ml/min

A: H₂O (0.1% formic acid), B: CH₃CN (0.1% formic acid)

t= 0 min A:B (90:10, v/v), t=15 min (100%B), t=21 min (100%B), t=22.1 min A:B(90:10, v/v)

using a linear gradient

¹H (600 MHz)

CDCl₃

CD₃OD (Methanol-d₄)

CDCl₃/CD₃OD

¹³C (150 MHz)

CDCl₃

CD₃OD (Methanol-d₄)

CDCl₃/CD₃OD

solubility

CHCl₃/MeOH (9:1)

MeOH

DMSO

estimated purity >90%

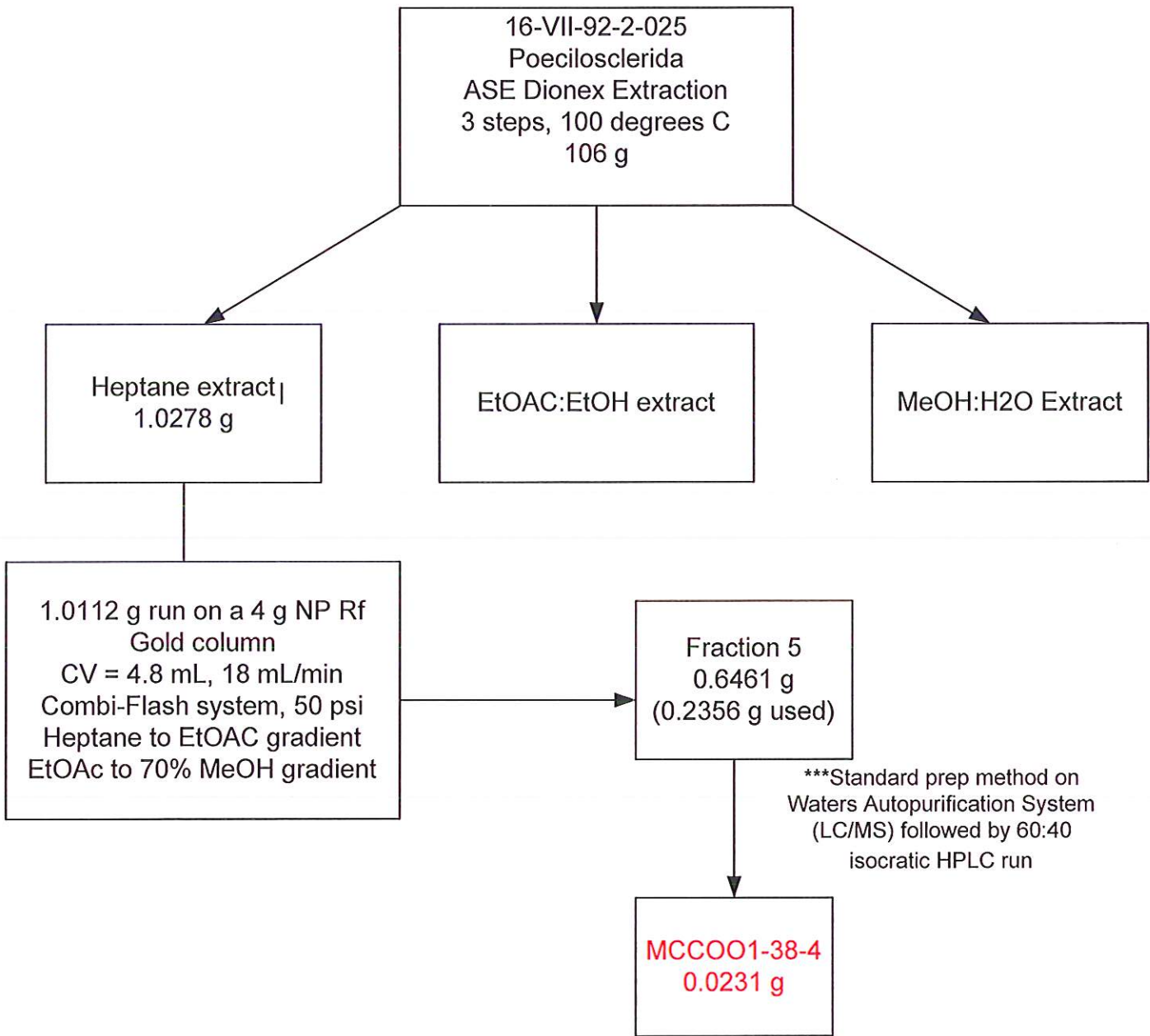
sample weight 19.0 mg

For further information contact:

Amy E. Wright, PhD, HBOI@FAU, 5600 US 1, North, Fort Pierce, FL 34946

awrigh33@hboi.fau.edu, 772-242-2459

Date: 1/28/13



Combi-Flash
 A:heptane, B: EtOAc, C: MeOH
 t=0 min (100%A), t=1.5 min (100% A), t=11.5min (100% B), t=13 min (100% B), t= 17 min B:C (30:70)

LC/MS:
 A: H₂O:CH₃CN (95:5) - 0.1% TFA B: CH₃CN - 0.1% TFA
 t=0 min A:B (95:5), t=20 min (100% B), t=23 min (100%B)

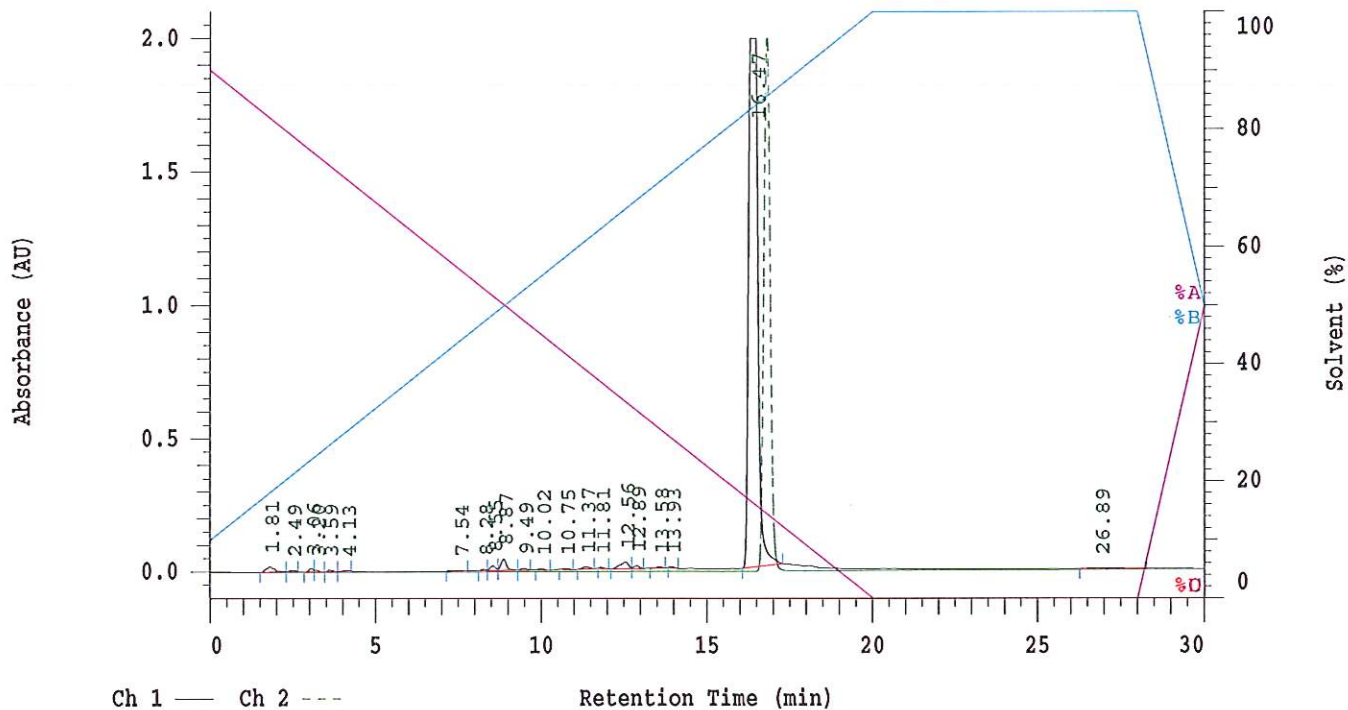
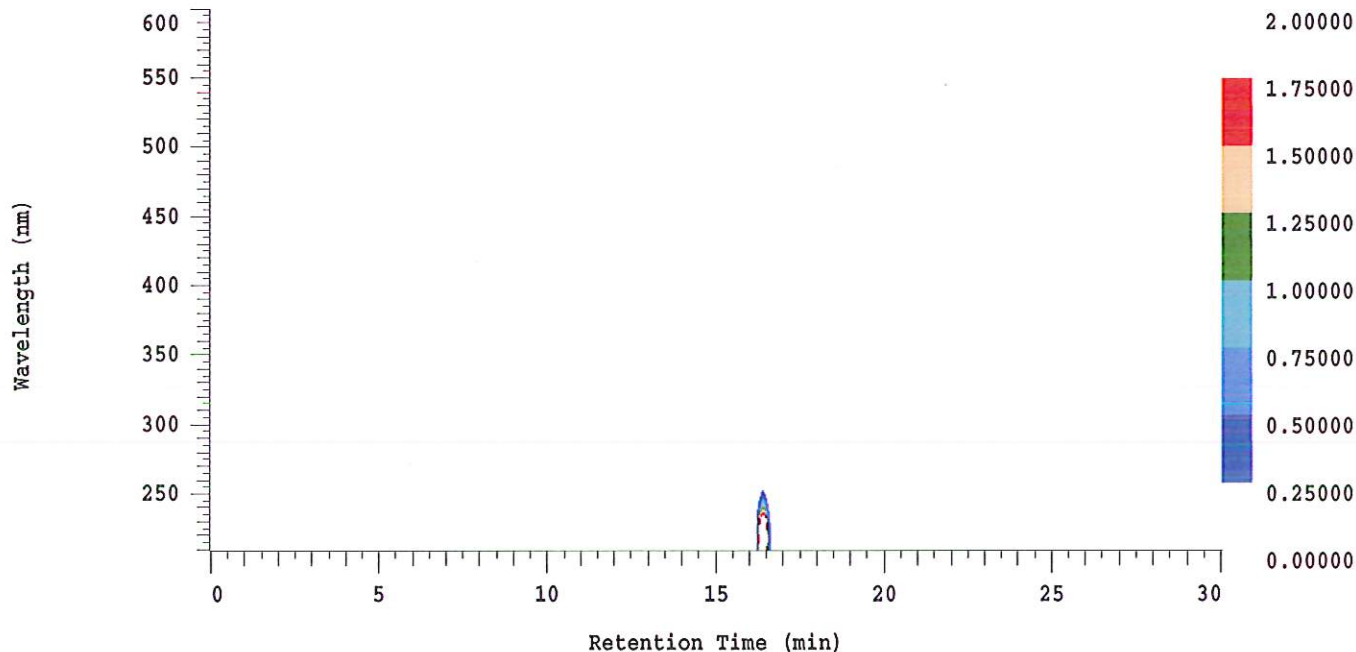
D-2000 Elite HPLC System Manager Report

Analyzed: 01/24/2013 10:52 AM

Reported: 01/24/2013 11:26 AM

Sample Name: HBOI-353

Sample Description: HBOI-353



Acquisition Method: autosamp_30mn_UV220_wELSD

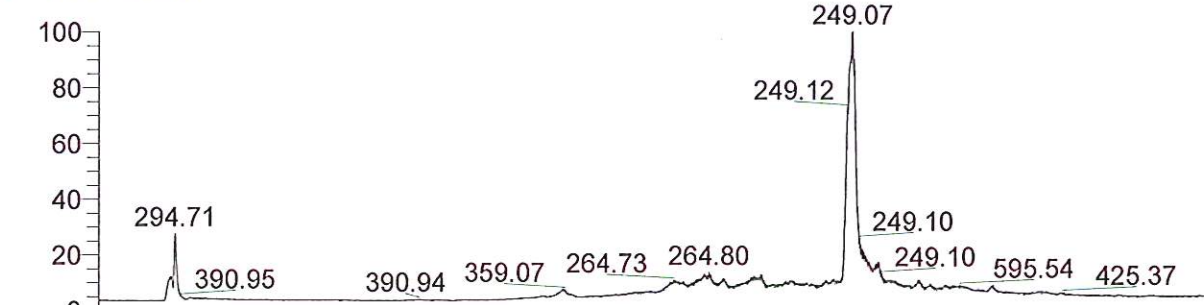
Column Type: Vydac C18

Pump A Solvent A: H2O/5% ACN

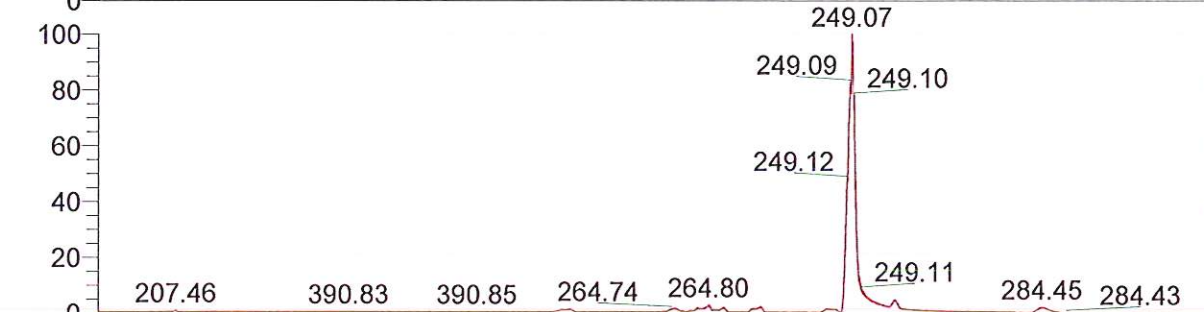
Pump A Solvent B: ACN

Method Description:

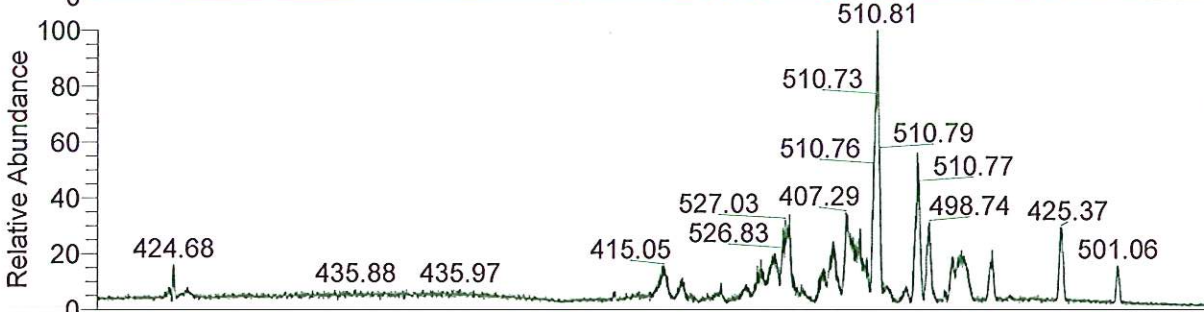
RT: 0.00 - 24.99



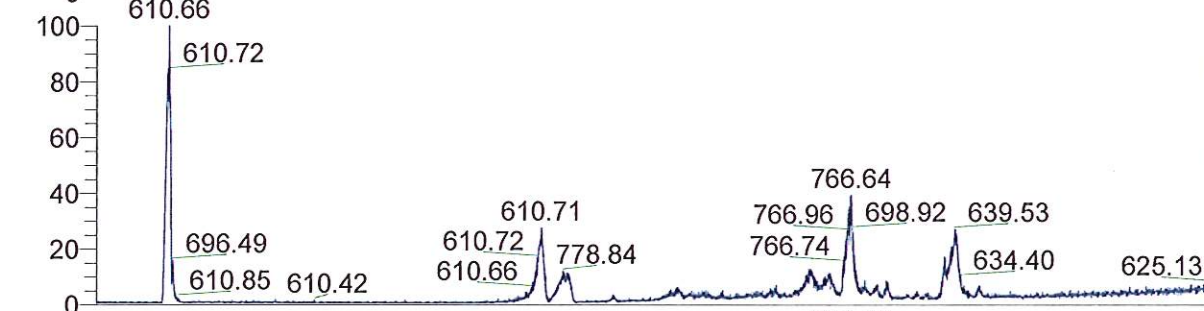
NL: 6.23E6
TIC F: ITMS + c ESI Full ms
[200.00-2000.00] MS
BG_HB_353_MCOO1_38_4_furan



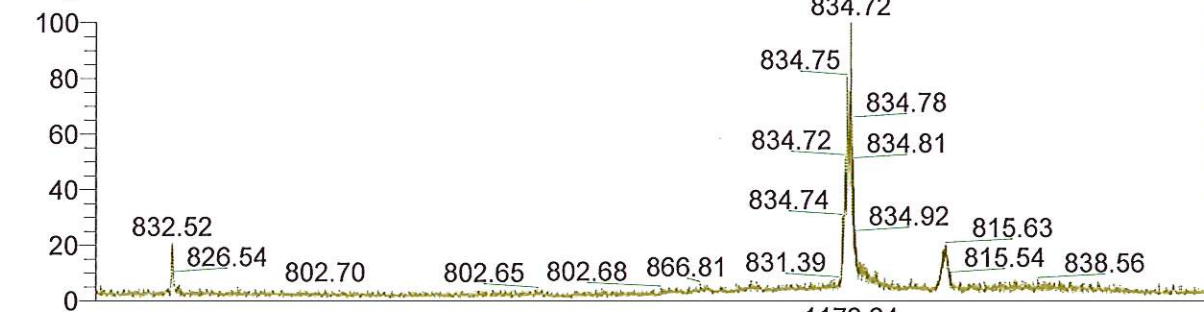
NL: 1.71E6
Base Peak m/z=
200.00-400.00 F: ITMS + c
ESI Full ms [200.00-2000.00] MS
BG_HB_353_MCOO1_38_4_furan



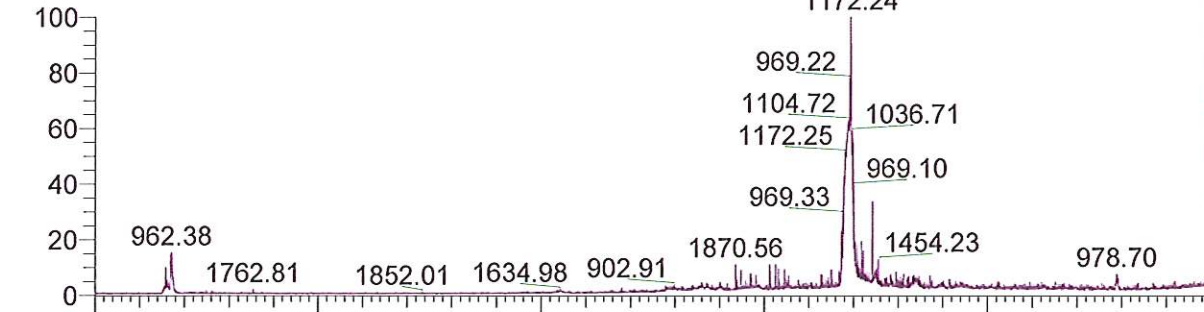
NL: 6.13E4
Base Peak m/z=
400.00-600.00 F: ITMS + c
ESI Full ms [200.00-2000.00] MS
BG_HB_353_MCOO1_38_4_furan



NL: 3.73E4
Base Peak m/z=
600.00-800.00 F: ITMS + c
ESI Full ms [200.00-2000.00] MS
BG_HB_353_MCOO1_38_4_furan

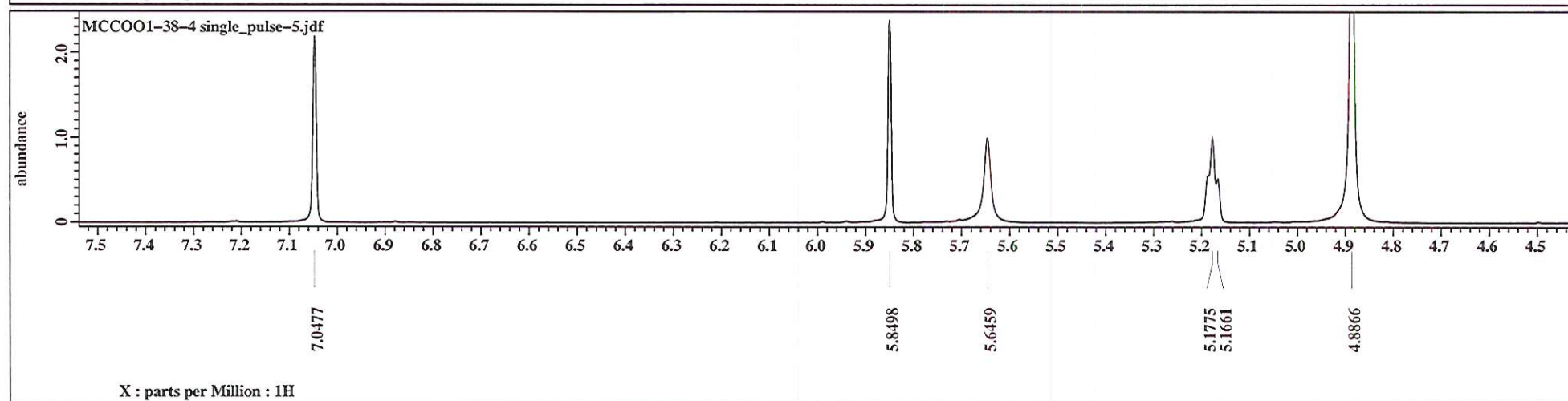
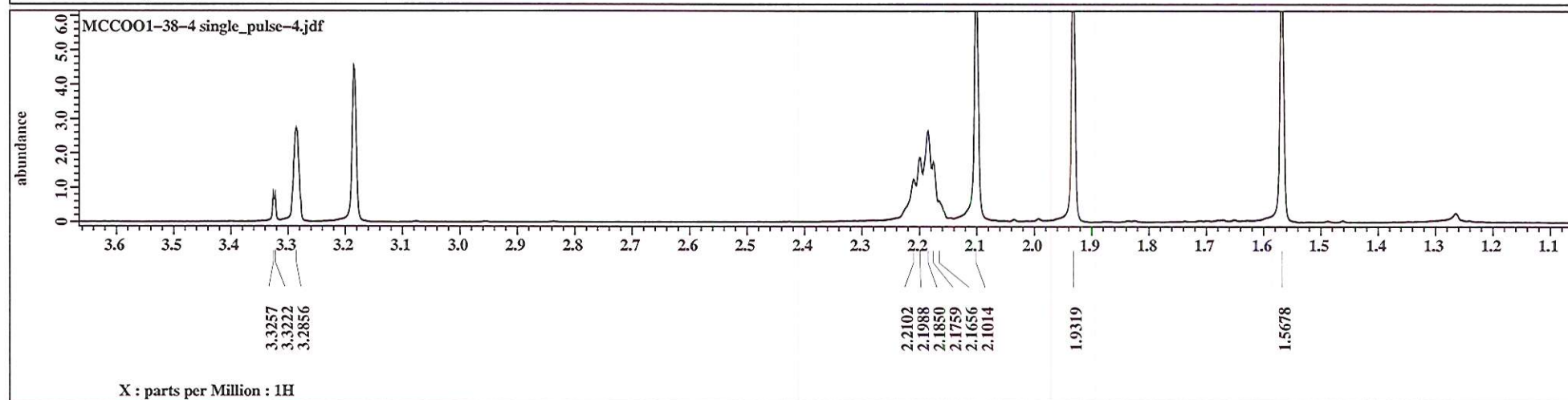
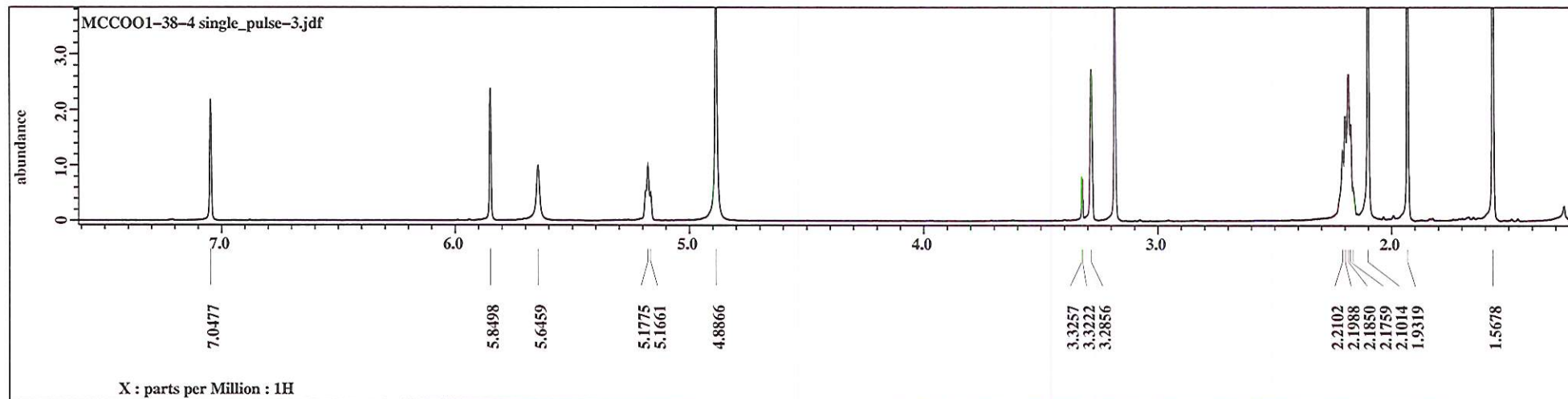


NL: 1.61E4
Base Peak m/z=
800.00-900.00 F: ITMS + c
ESI Full ms [200.00-2000.00] MS
BG_HB_353_MCOO1_38_4_furan



NL: 2.01E4
Base Peak m/z=
900.00-2000.00 F: ITMS + c
ESI Full ms [200.00-2000.00] MS
BG_HB_353_MCOO1_38_4_furan

Time (min)



MCC004-38-4

