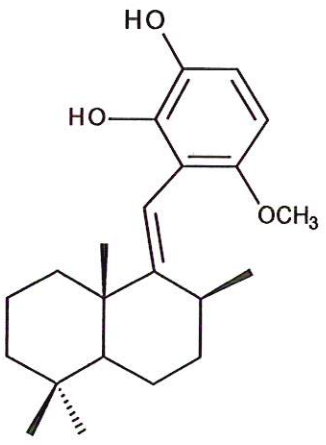


# HARBOR BRANCH

FLORIDA ATLANTIC UNIVERSITY

HBOI-216	
WIEDENDIOL B	
$C_{22}H_{32}O_3$	344.49
Petrosiidae	
Coval et al, 1995, <i>Biorg. Med. Chem. Lett.</i> , 5(6): 605-610	

Isolation scheme (Visio) attached

HPLC (trace attached)

Method: Vydac C18 Protein and Peptide, 4.6 x 250mm, 10 $\mu$   
 flow 1 ml/min, detection: PDA: UV (extracted at 220 nm, black), ELSD (green dotted)  
 A: H<sub>2</sub>O:CH<sub>3</sub>CN (95:5, v/v), B: CH<sub>3</sub>CN  
 t=0 min A:B (90:10, v/v), t=20 min (100%B), t=28 min (100%B)

LC-MS (spectrum attached)

Method: Vydac C18 Protein and Peptide, 2.1x150 mm, flow 0.2 ml/min  
 A:H<sub>2</sub>O (0.1% formic acid), B:CH<sub>3</sub>CN (0.1% formic acid)  
 t= 0 min A:B (90:10, v/v), t=15 min (100%B), t=21 min (100%B), t=22 min A:B(90:10,v/v)  
 Using a linear gradient

<sup>1</sup>H (600 MHz)       CDCl<sub>3</sub>       CD<sub>3</sub>OD (Methanol-d<sub>4</sub>)       CDCl<sub>3</sub>/CD<sub>3</sub>OD

<sup>13</sup>C (150 MHz)       CDCl<sub>3</sub>       CD<sub>3</sub>OD (Methanol-d<sub>4</sub>)       CDCl<sub>3</sub>/CD<sub>3</sub>OD

solubility       CHCl<sub>3</sub>/MeOH (9:1)       MeOH       DMSO

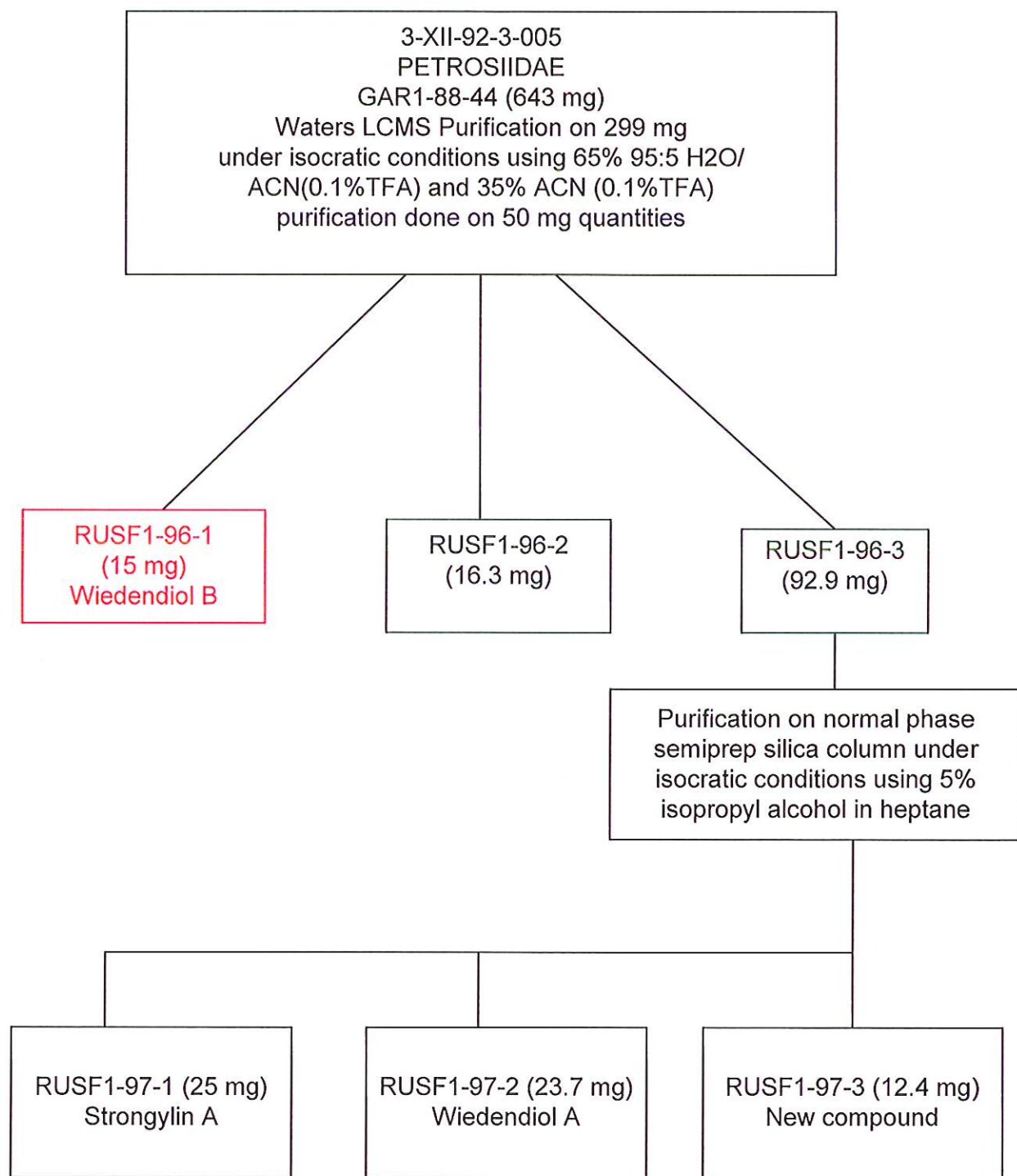
estimated purity\_90\_%

sample weight 22.5 mg

For further information contact:

Amy E. Wright, PhD, HBOI@FAU, 5600 US 1, North, Fort Pierce, FL 34946

Date: 7/17/13



Semi prep silica column used was a Whatman partisol 10 (m9/25) column 9.5×250 mm.

Flow rate 3 mL/min.

Isocratic conditions 5% Isopropyl alcohol in heptane for 20 min.

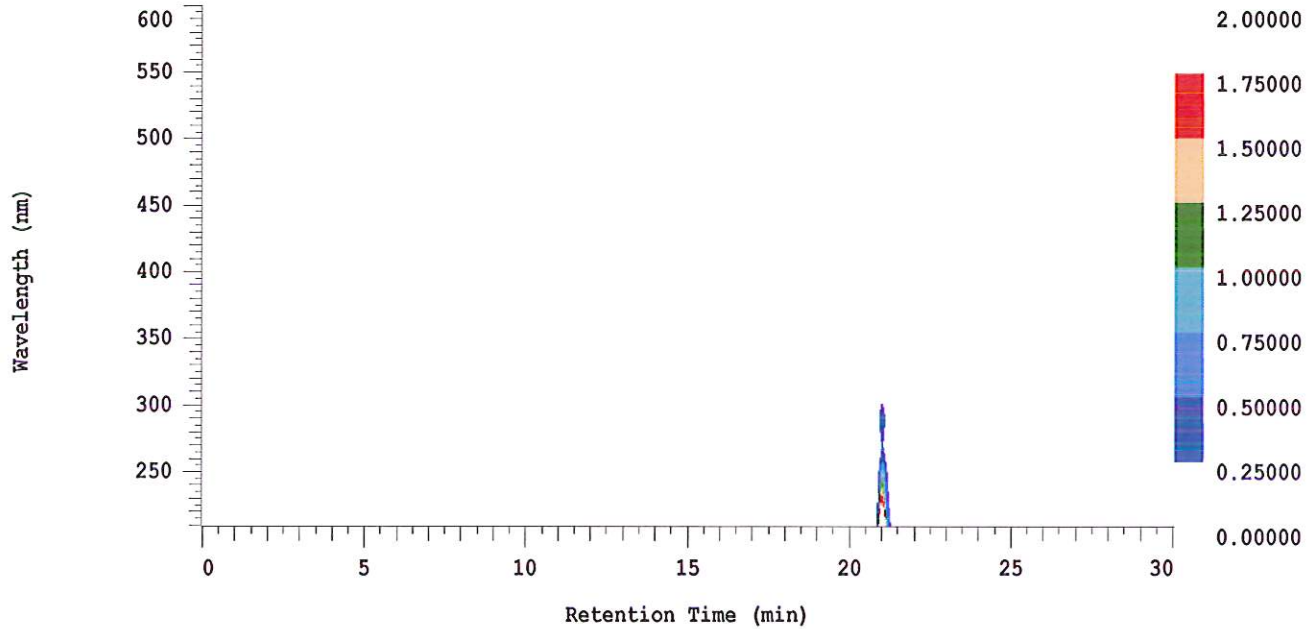
### D-2000 Elite HPLC System Manager Report

Analyzed: 06/28/2013 10:36 AM

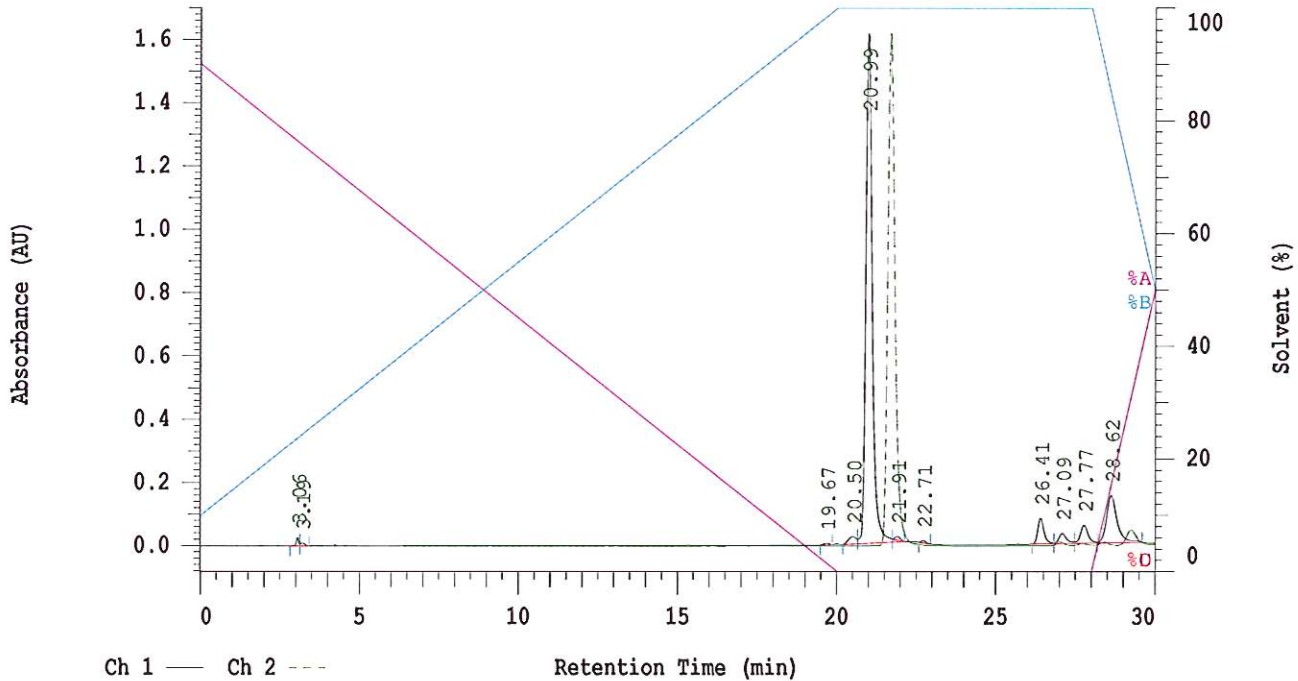
Reported: 06/28/2013 04:03 PM

Sample Name: HBOI-216

Sample Description: HBOI-216 Weidendiol



Channel 1 Chrom Type: Fixed WL Chromatogram, 230 nm



Acquisition Method: autosampler\_30min\_wELSD

Column Type: Vydac C18

Pump A Solvent A: H2O/5% ACN

Pump A Solvent B: ACN

Method Description:

RT: 0.00 - 21.00

