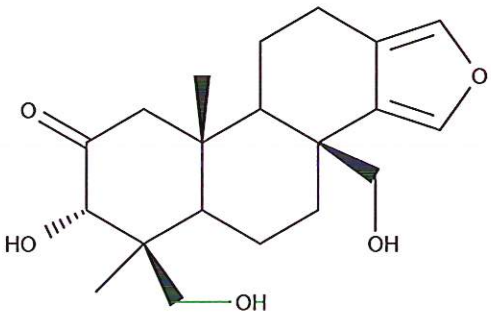


HBOI-86	
SPONGIATRIOL	
$C_{20}H_{28}O_5$	348.44
<i>Spongia</i> sp.	
Kazlauskas et al, AJC, 1979, 32, 867-880	

hplc (trace attached)

Method: Vydac C18 Protein and Peptide, 4.6 x 250mm, 10 $\mu$   
 flow 1 ml/min, detection: PDA: UV (extracted at 220 nm, black); ELSD (green dotted)  
 A: H<sub>2</sub>O:CH<sub>3</sub>CN (95:5, v/v), B: CH<sub>3</sub>CN  
 t=0 min A:B (90:10, v/v), t=20 min (100%B) , t=28 min (100%B)

LC-MS (spectrum attached)

Method: Vydac C18 Protein and Peptide, 2.1x150 mm, flow 0.2 ml/min  
 A: H<sub>2</sub>O (0.1% formic acid), B:CH<sub>3</sub>CN (0.1% formic acid)  
 t= 0 min A:B (90:10, v/v), t=15 min (100%B), t=21 min (100%B), t=22.1 min A:B(90:10, v/v)  
 using a linear gradient

<sup>1</sup>H (600 MHz)       CDCl<sub>3</sub>       CD<sub>3</sub>OD (Methanol-d<sub>4</sub>)       CDCl<sub>3</sub>/CD<sub>3</sub>OD

<sup>13</sup>C (150 MHz)       CDCl<sub>3</sub>       CD<sub>3</sub>OD (Methanol-d<sub>4</sub>)       CDCl<sub>3</sub>/CD<sub>3</sub>OD

solubility       CHCl<sub>3</sub>/MeOH (9:1)       MeOH       DMSO

estimated purity \_\_>90\_ %

sample weight \_\_19.1\_\_ mg

For further information contact:

Amy E. Wright, PhD, HBOI@FAU, 5600 US 1, North, Fort Pierce, FL 34946  
[awright33@hboi.fau.edu](mailto:awright33@hboi.fau.edu), 772-242-2459

Date: 1/28/13

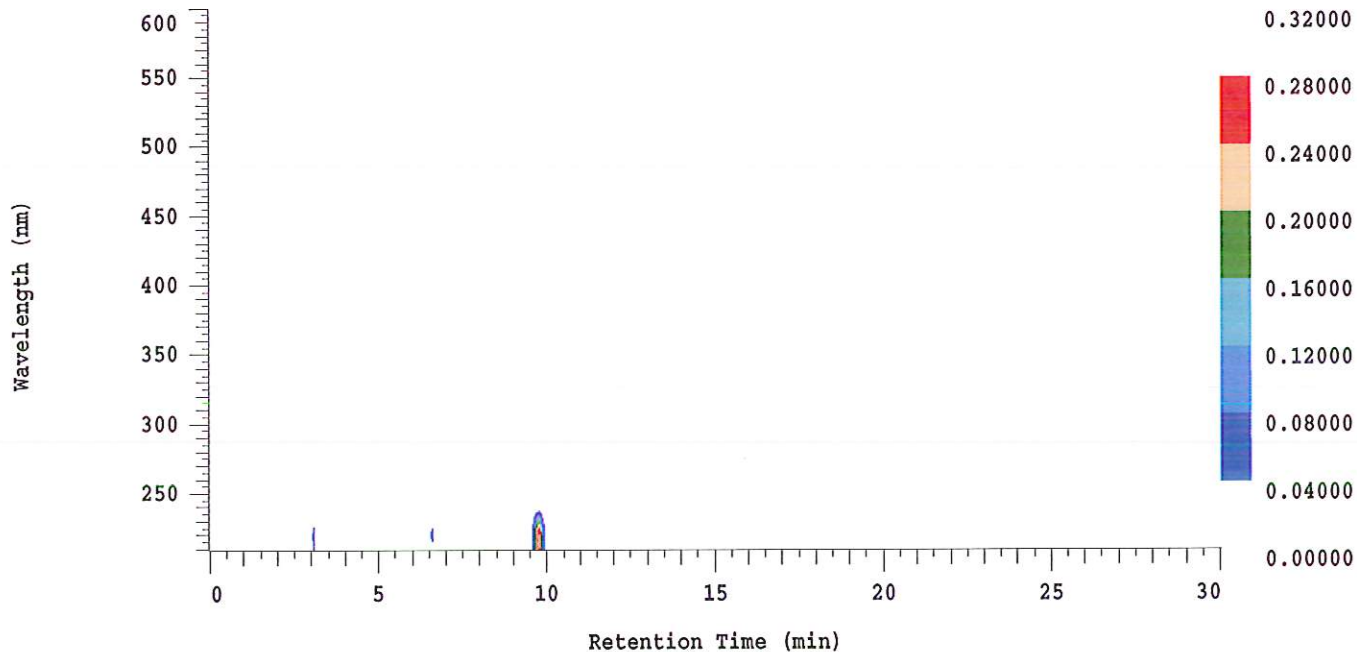
### D-2000 Elite HPLC System Manager Report

Analyzed: 01/23/2013 08:10 PM

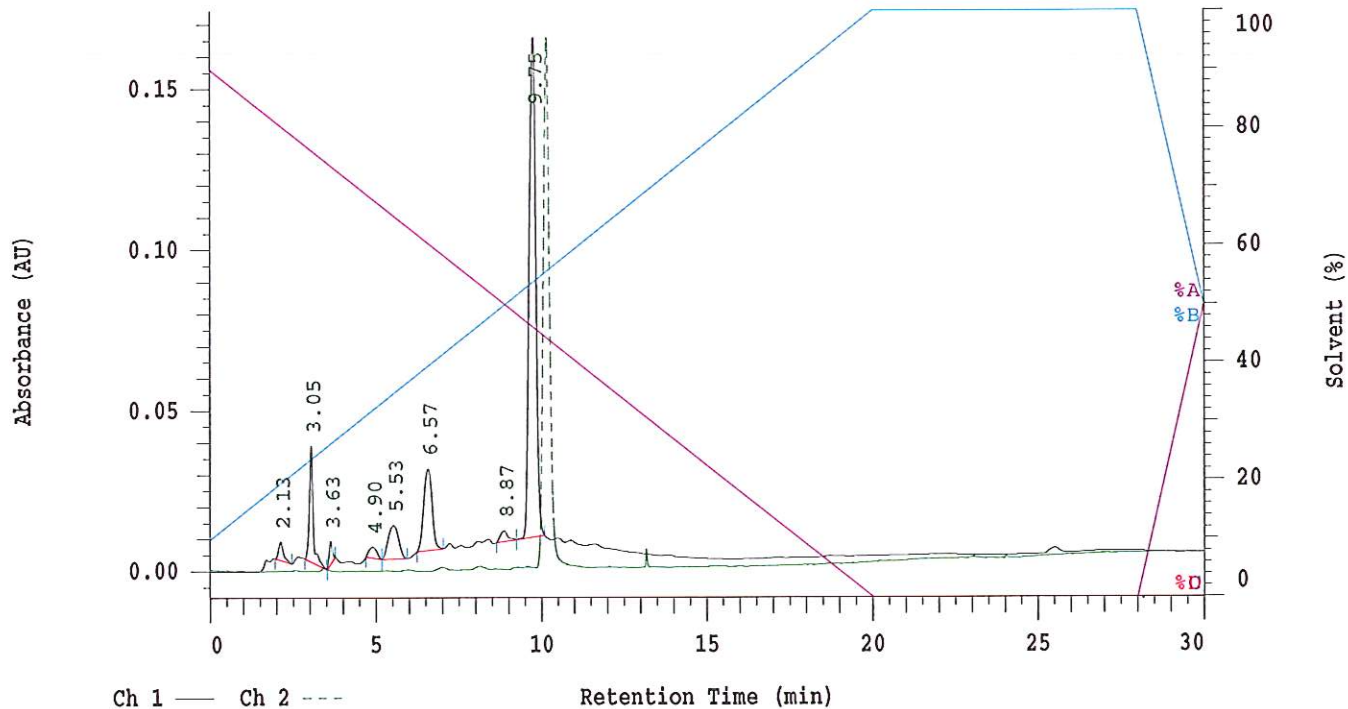
Reported: 01/24/2013 10:41 AM

Sample Name: HBOI-86

Sample Description: HBOI-86



Channel 1 Chrom Type: Fixed WL Chromatogram, 230 nm



Acquisition Method: autosamp\_30mn\_UV220\_wELSD

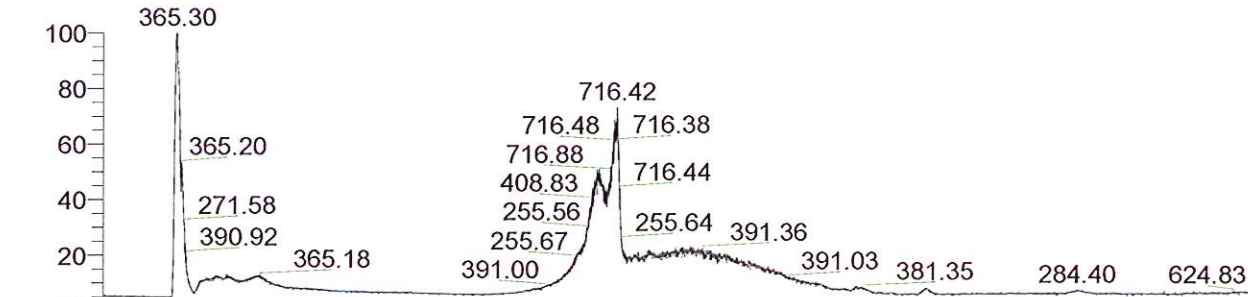
Column Type: Vydac C18

Pump A Solvent A: H2O/5% ACN

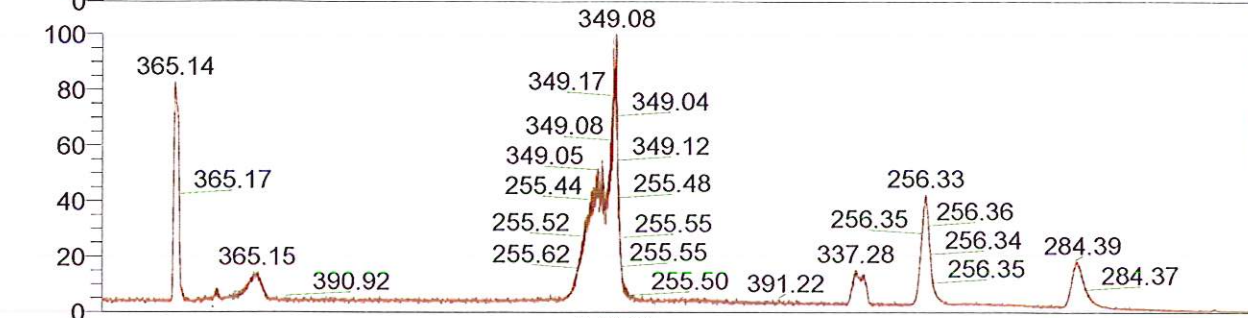
Pump A Solvent B: ACN

Method Description:

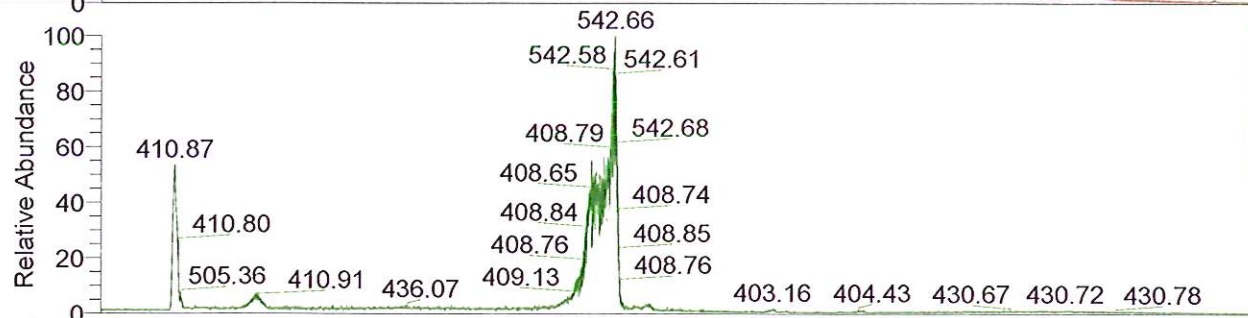
RT: 0.00 - 24.99



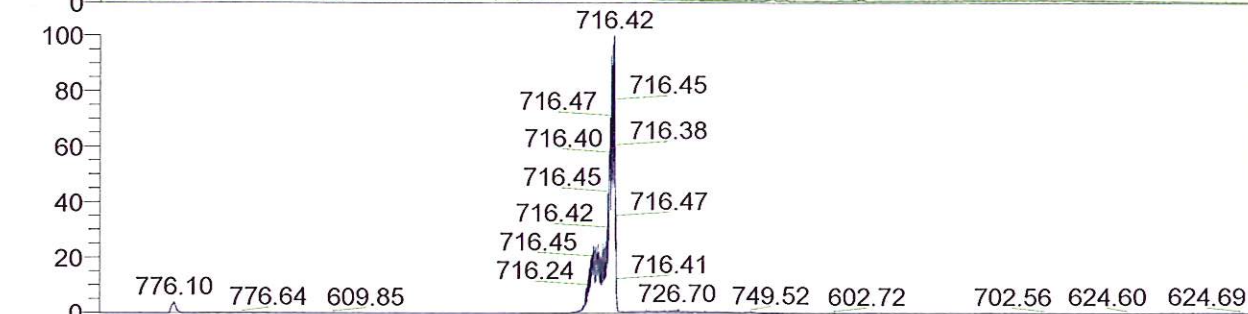
NL: 4.41E6  
 TIC F: ITMS + c ESI Full  
 ms [ 200.00-2000.00] MS  
 BG\_HB\_86\_Spongiatriol



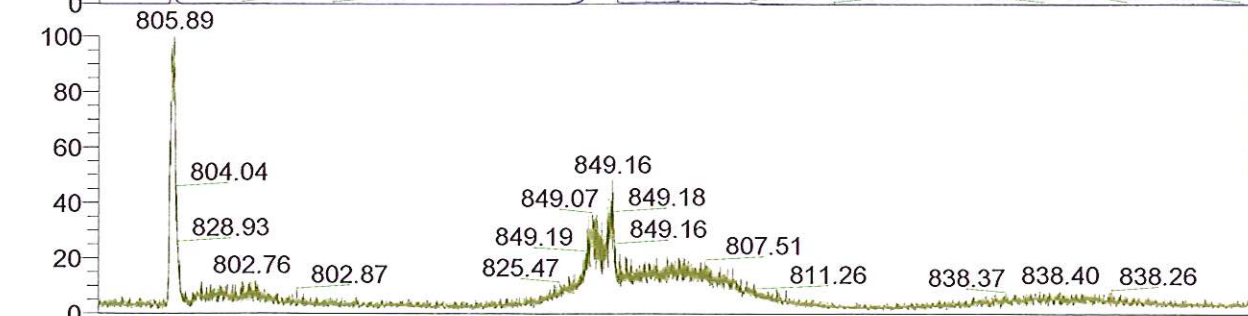
NL: 2.19E5  
 Base Peak m/z=  
 200.00-400.00 F: ITMS +  
 c ESI Full ms [ 200.00-2000.00] MS  
 BG\_HB\_86\_Spongiatriol



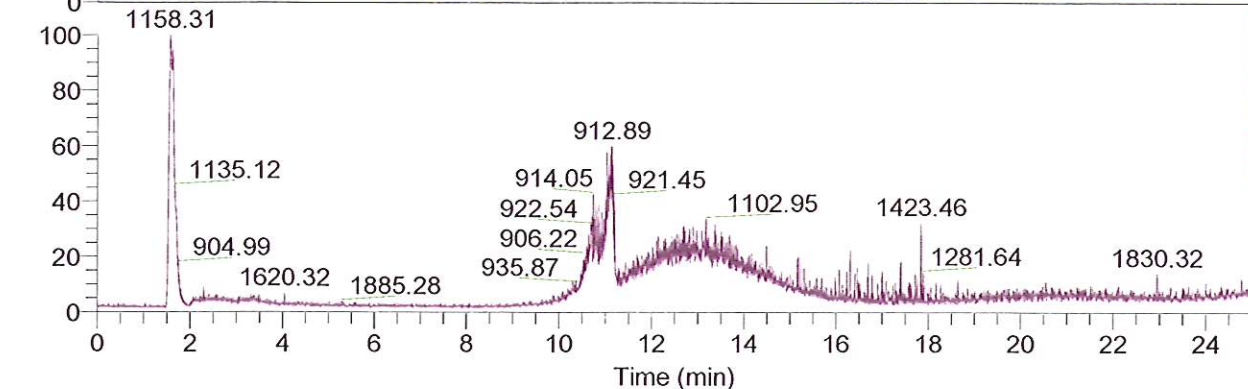
NL: 1.85E5  
 Base Peak m/z=  
 400.00-600.00 F: ITMS +  
 c ESI Full ms [ 200.00-2000.00] MS  
 BG\_HB\_86\_Spongiatriol



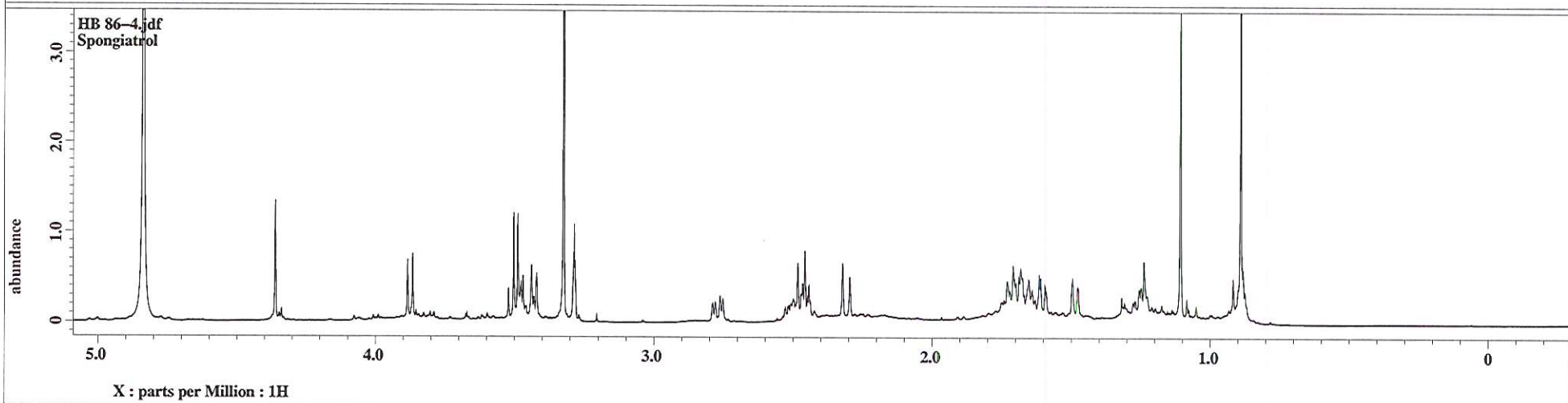
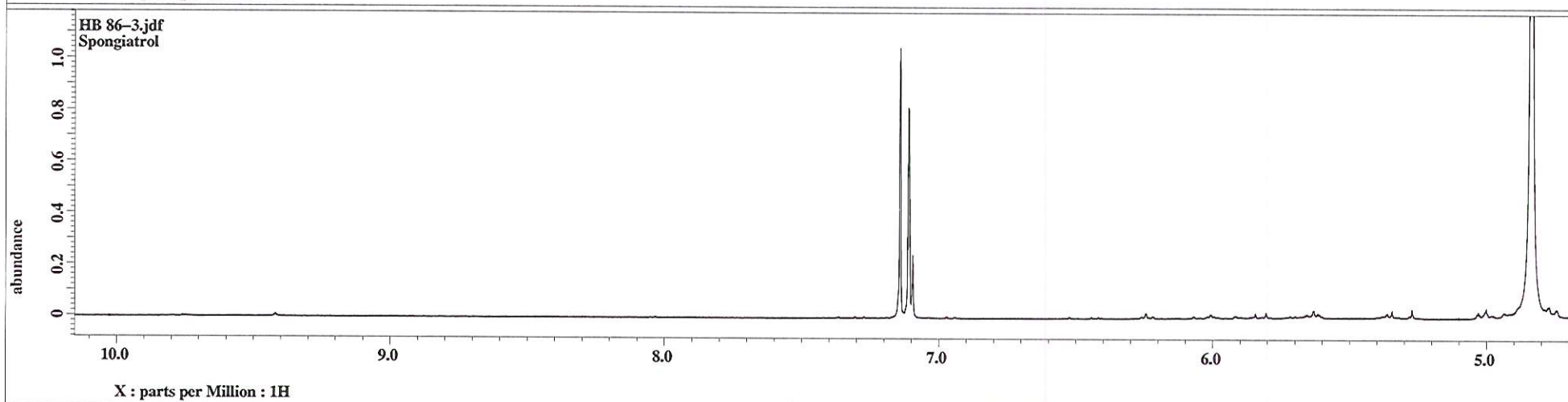
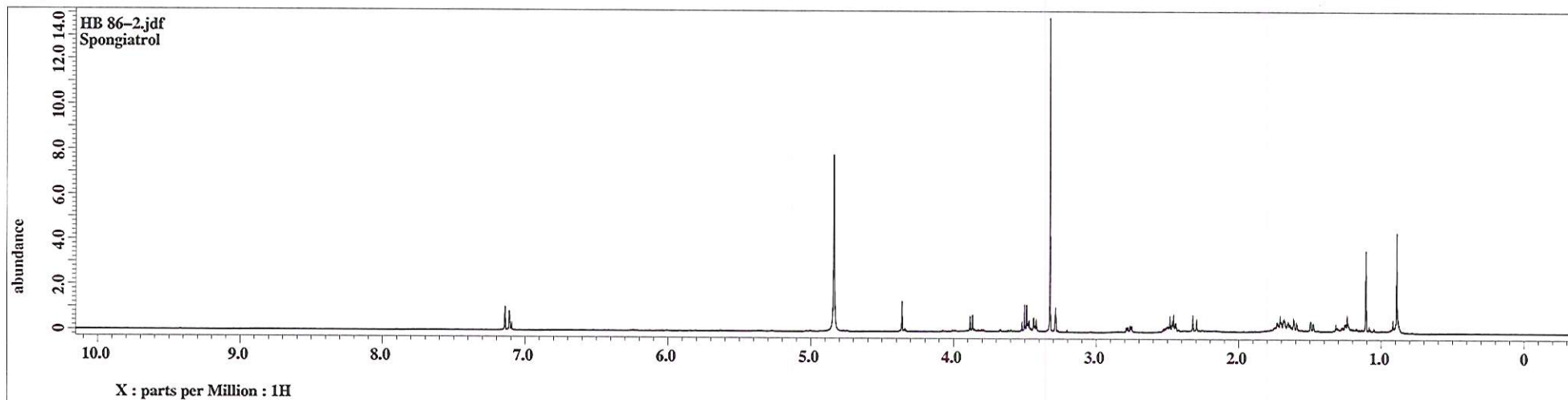
NL: 5.82E5  
 Base Peak m/z=  
 600.00-800.00 F: ITMS +  
 c ESI Full ms [ 200.00-2000.00] MS  
 BG\_HB\_86\_Spongiatriol



NL: 1.32E4  
 Base Peak m/z=  
 800.00-900.00 F: ITMS +  
 c ESI Full ms [ 200.00-2000.00] MS  
 BG\_HB\_86\_Spongiatriol

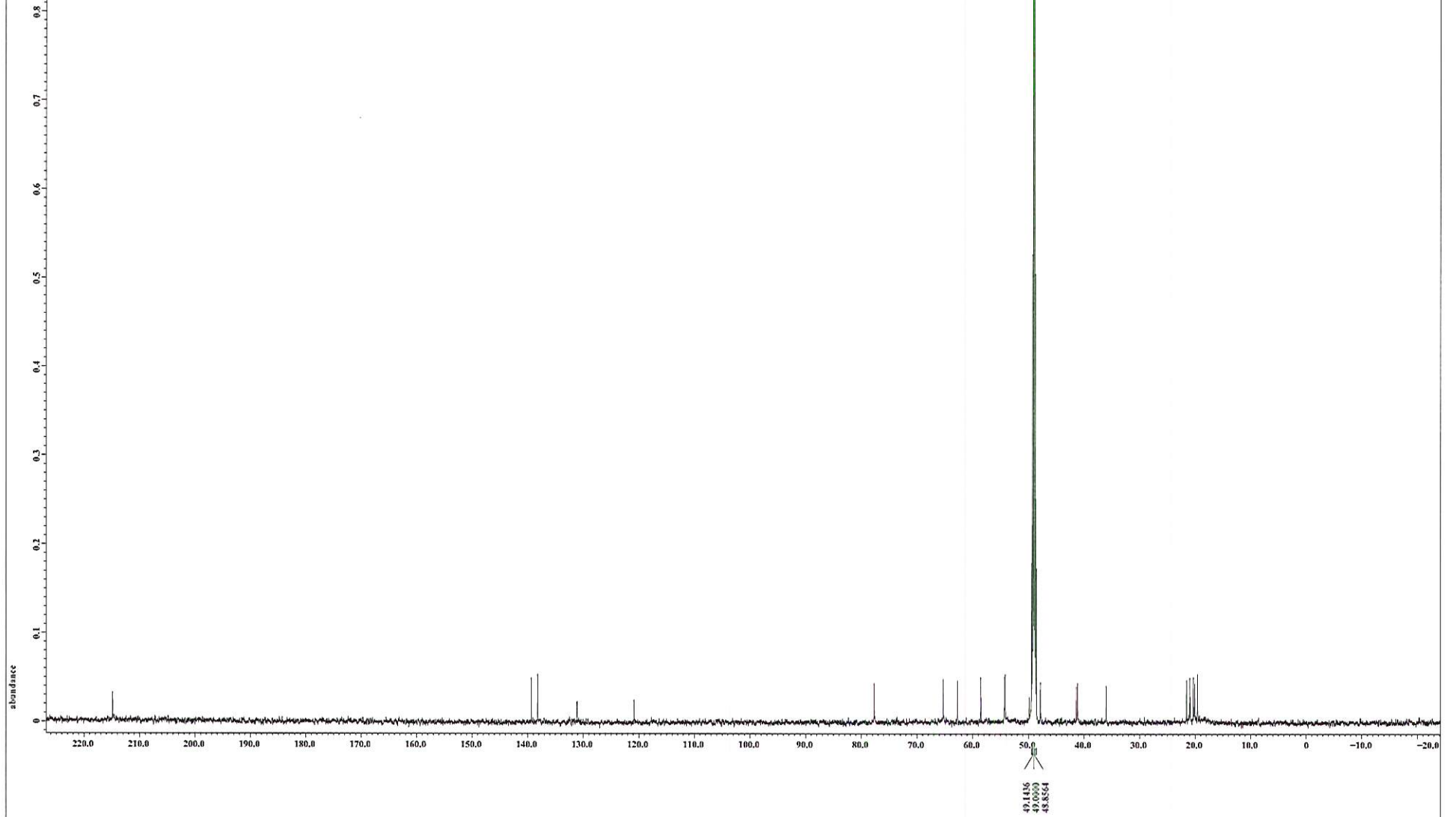


NL: 7.97E3  
 Base Peak m/z=  
 900.00-2000.00 F: ITMS +  
 c ESI Full ms [ 200.00-2000.00] MS  
 BG\_HB\_86\_Spongiatriol





HB86 Spongatriol\_MeOD\_CARBON-4.jdf  
HB86 Spongatriol MeOD



X : parts per Million : 13C