



INNOVATION VILLAGE - SITE PLAN



INNOVATION VILLAGE - SITE PLAN

Computer Rendered Conceptual Architectural Images of FAU Stadium and Related Surroundings Completed to Assist in Fundraising

Preliminary Concepts a 30,000 – 35,000 Seat Stadium:



FAU FOOTBALL STADIUM - PRELIMINARY CONCEPT



FAU FOOTBALL STADIUM - PRELIMINARY CONCEPT
DECEMBER 9, 2007





Preliminary Concepts a 40,000 – 45,000 Seat Stadium:



FAU STADIUM



FAU FLORIDA ATLANTIC UNIVERSITY FAU FOOTBALL STADIUM - PRELIMINARY CONCEPT DECEMBER 4 2007



FAU FLORIDA ATLANTIC UNIVERSITY FAU FOOTBALL STADIUM - PRELIMINARY CONCEPT DECEMBER 4 2007

Preliminary Concepts a 60,000 – 65,000 Seat Stadium:



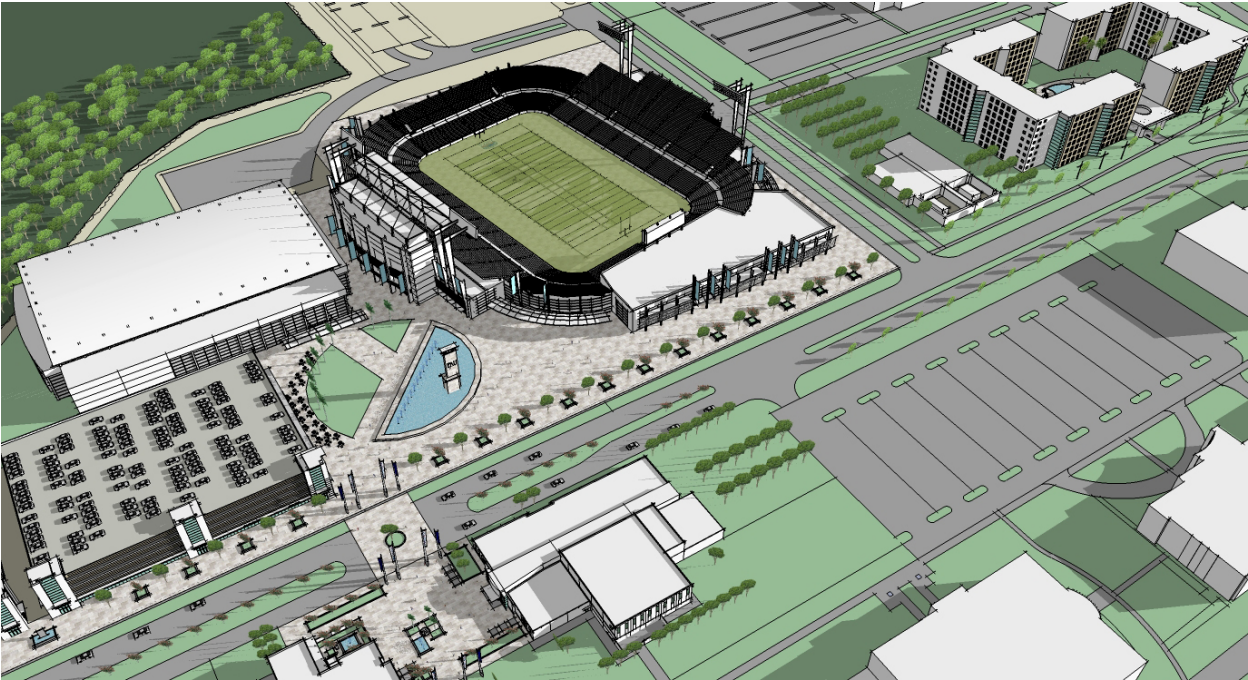
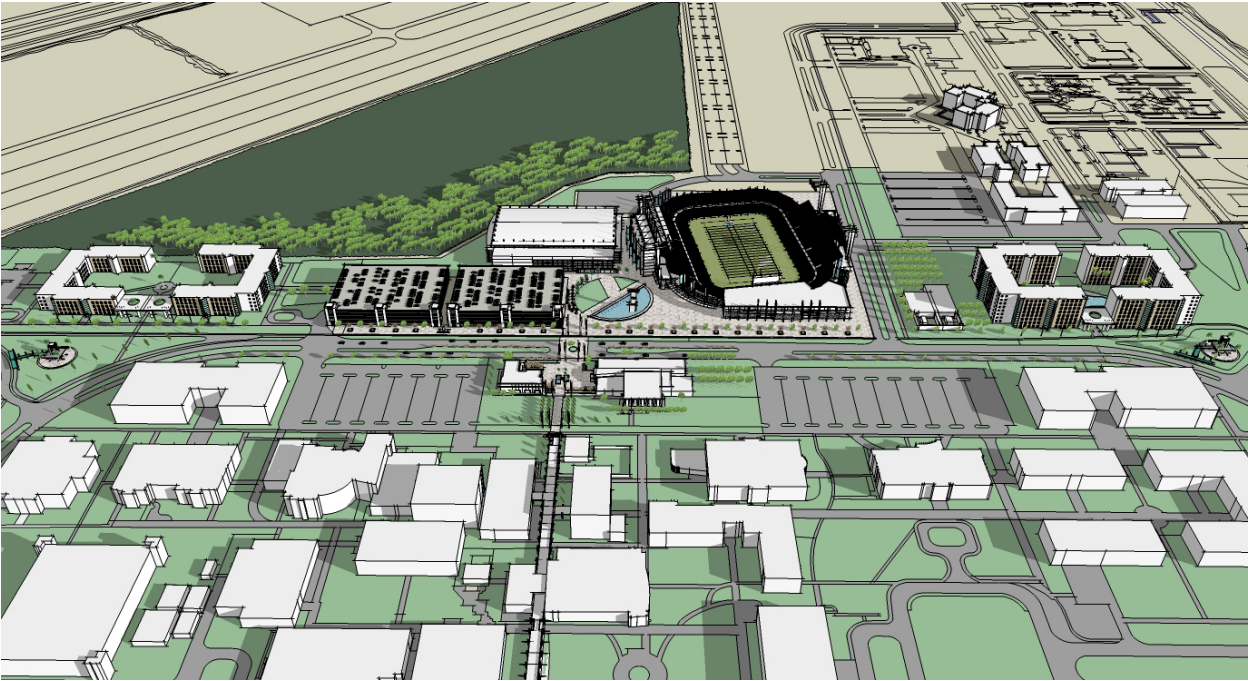
FAU FOOTBALL STADIUM - PRELIMINARY CONCEPT



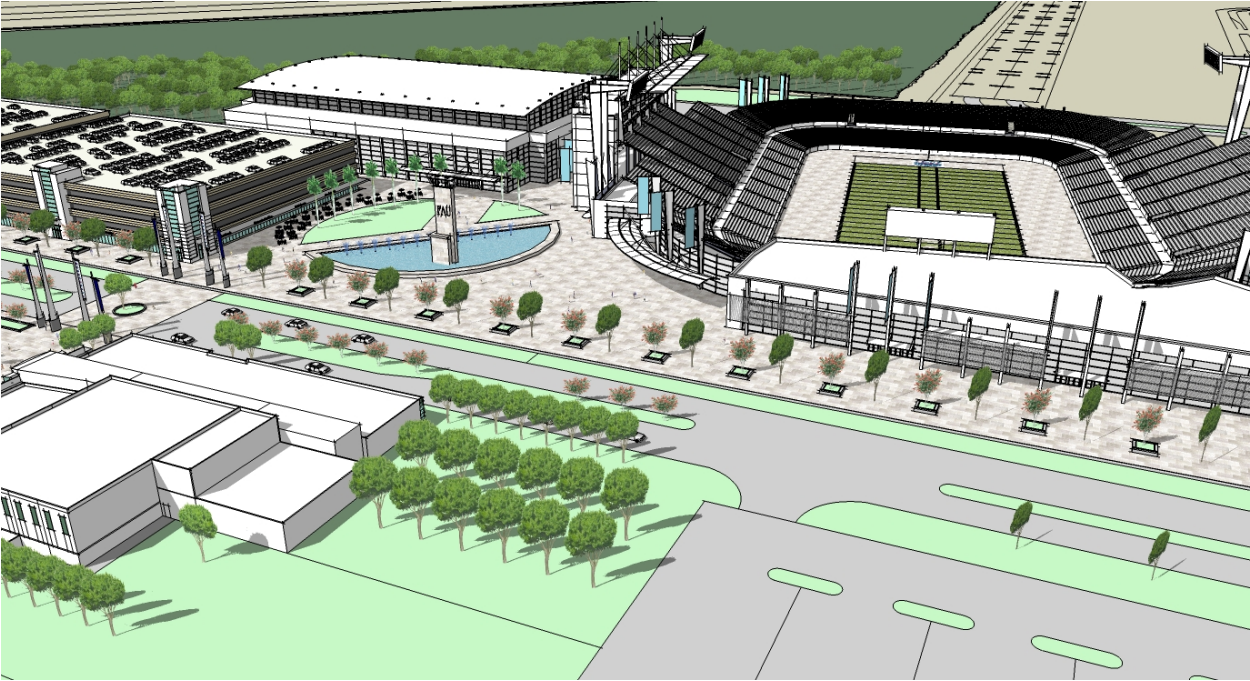
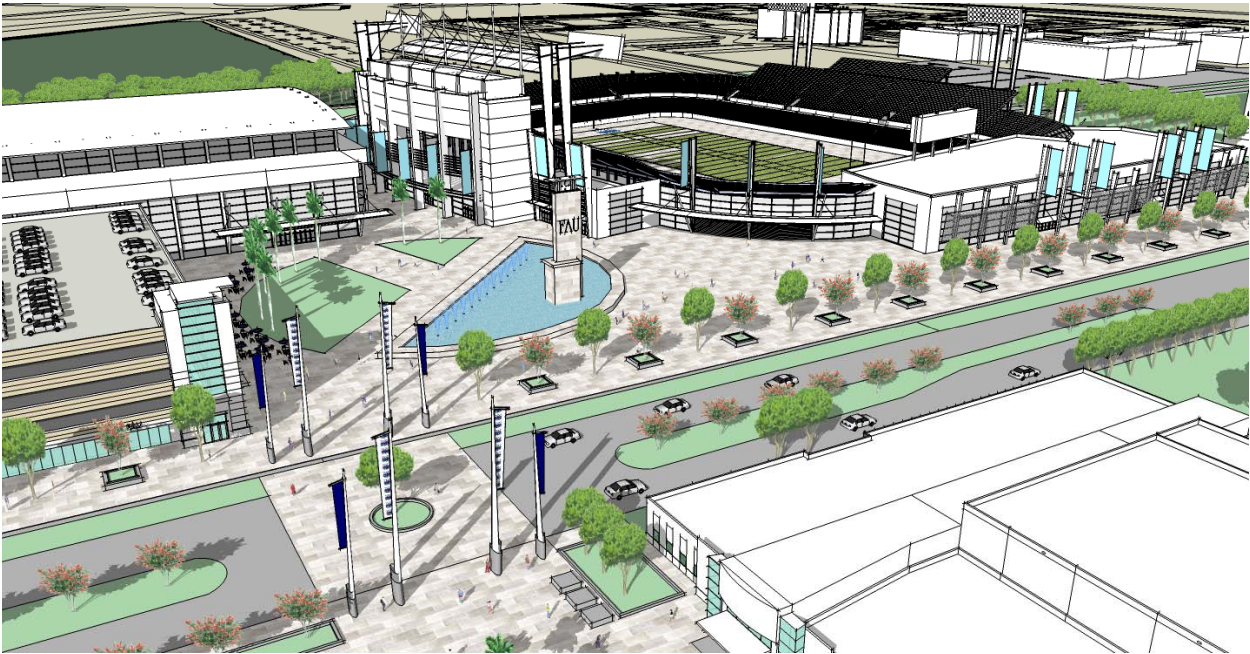
FAU STADIUM



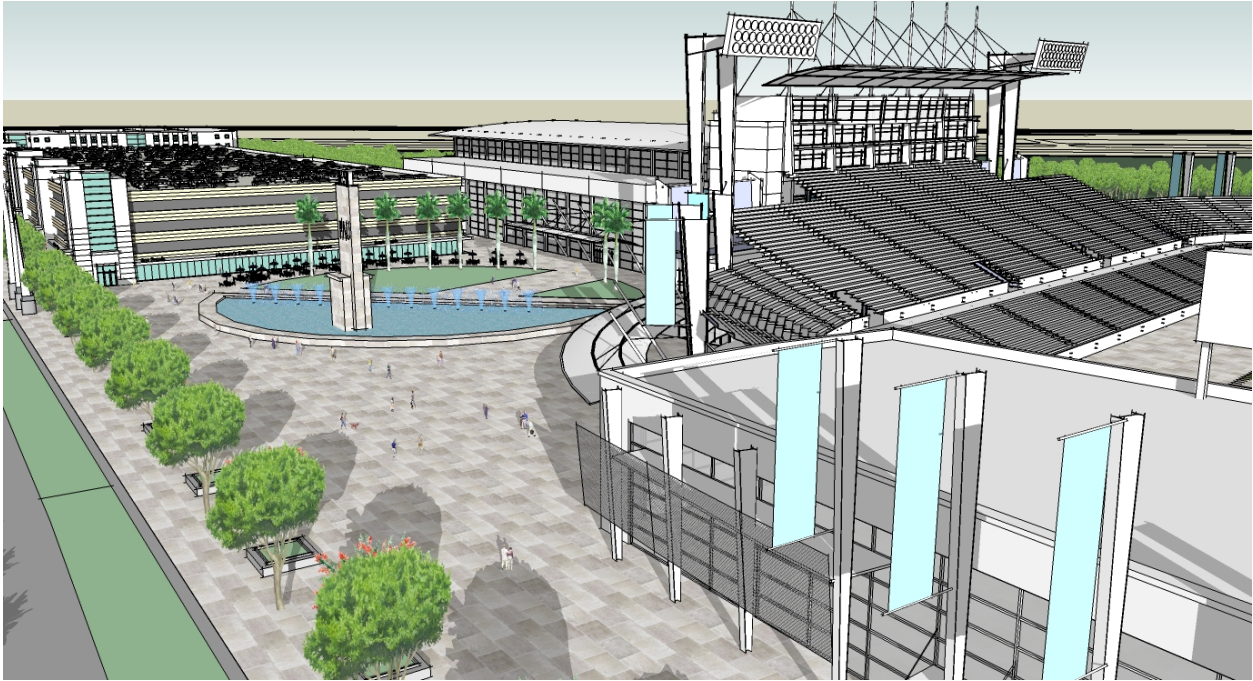
Other Computer Rendered Images of Proposed Stadium and Surroundings.



FAU STADIUM



FAU STADIUM



FAU STADIUM



Excerpt from C. H. Johnson, Inc. Report Presentation - BOT Retreat Sept 17 & 18, 2007:

Stadium Demand Assumptions (cont.)

Premium Seating Assumptions				
	Total Available	Price	% Sold	Total Revenues
Luxury Suites	20	\$45,000	100	\$900,000
Club Seats	1,000	1,500	90	1,350,000
Total Revenues*				\$2,092,500

*Assumes 7% fulfillment costs
Source: Johnson Consulting*

- Premium Seating Analysis for Year 1

- 20 luxury suites, each seating 16

- 100% of the suites will be sold at \$45,000 exclusive of tickets for a total revenue of \$900,000

- 1,000 club seats at \$1,500 each exclusive of tickets

- 90% of club seats sold for a total of \$1.35 million

- Total revenues from premium seating approximately \$2.1 million net of 7% fulfillment costs