

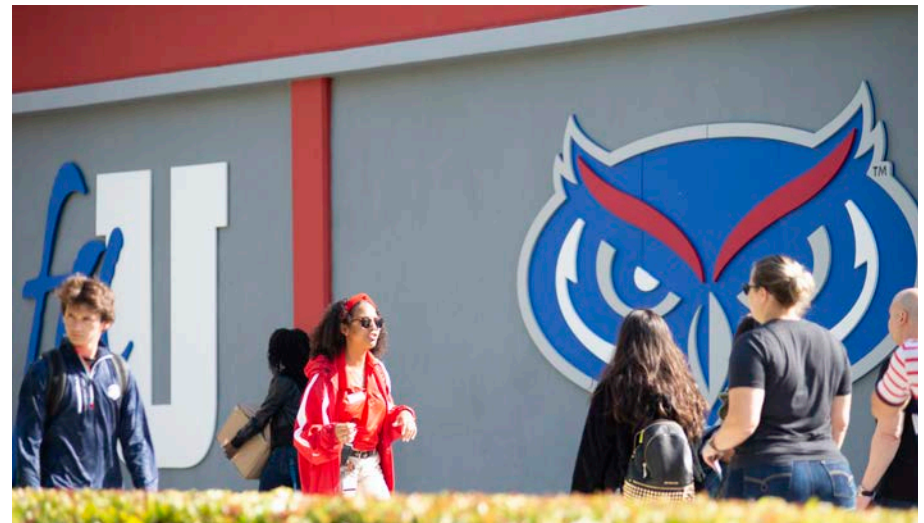
key recommendations

The Campus Districts Plan provides a comprehensive vision to meet long-term goals for the growth of the campus. While a master plan typically provides for the needs of a campus within a ten-year horizon, the Campus Districts Diagram (Figure 0.1) and Natural Systems Diagram (Figure 0.2) provide a broad framework for the campus to guide development and growth beyond the specific program needs identified. Key recommendations include:

- » A new Gateway District in the southeast area of campus to support partnership opportunities, upper class student housing, and community engagement programs.
- » Future academic facilities located primarily in the core campus area, proximate to existing academic programs. The plan also outlines numerous renovation opportunities to maximize the use of existing academic space and to potentially repurpose underutilized spaces for computational research and some types of clinical research.
- » The University strategic plan outlines ambitious research goals. The plan provides for research space accommodations on campus property and also recognizes the potential to leverage research partnerships utilizing the Research Park and other locations.
- » Significant growth in on-campus housing accommodations to strengthen the residential campus environment. The plan intentionally locates housing for first and second year students in the south campus area, closer to student life amenities and support programs. Future upper class housing is located in the southeast area of campus Gateway District to provide suite-style and apartment style accommodations, complementing mixed-use development in this area.



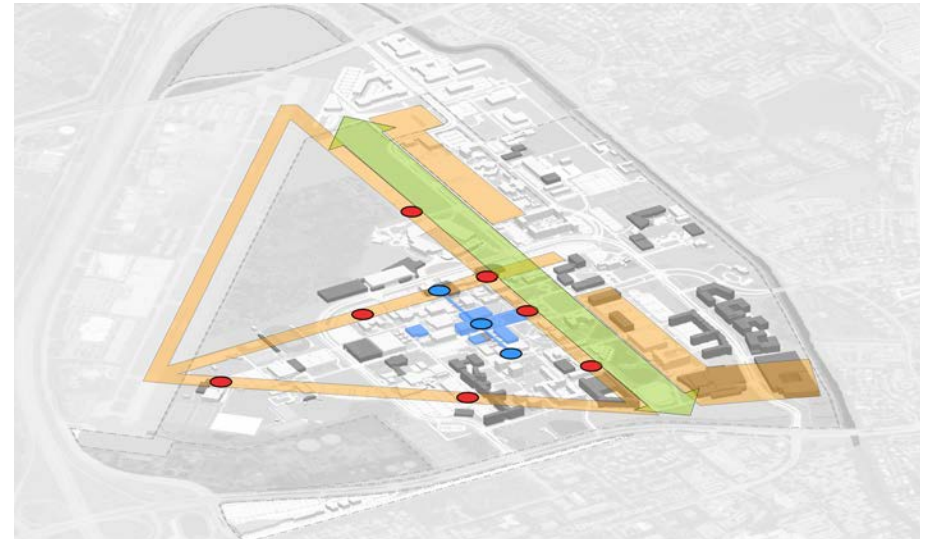
Conceptual Rendering of covered plaza at the Intersection of the Breezeway and Diversity Way



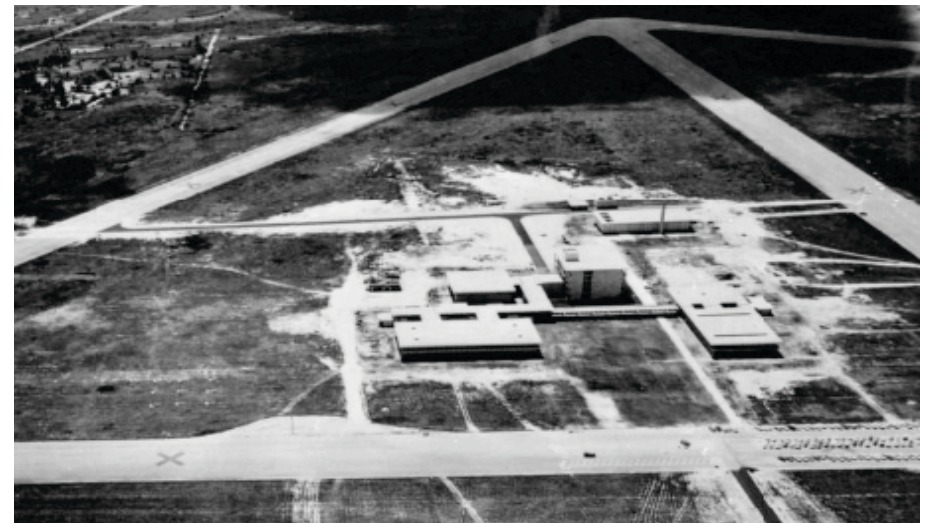
Tour group and students walk by iconic FAU mural at the southern terminus of the Breezeway

key recommendations

- » Programmatic zones organized around a north-south greenway and around reinforced north-south and east-west pedestrian circulation paths and nodes. Implementation of the Greenway will transform the open space network, connecting the Gateway District to the campus core and north to FAU Stadium while providing connection to the campus' history as an Army Air Base through interpretive exhibits and signage.
- » Parking shifts to the periphery of the campus core to maximize open space, valuable building sites, and to enhance the pedestrian experience in the walkable core campus.
- » Preserve and enhance natural systems and conservation areas along with a natural green space buffer on the perimeter of campus.
- » Implement and showcase sustainable practices throughout the campus that capitalize on FAU's unique location.
- » Recognize and celebrate the noteworthy history of the FAU campus and the former Army Air Base through historic markers and exhibits in strategic and significant campus locations.



Historic Framework Diagram



Campus Aerial circa 1964