

OWL Professional  
Clothes Closet

Dress to Impress.

# Business Casual vs. Professional



- Jacket, vest, or cardigan can be added
- More colors & patterns acceptable
  - Collared or polo shirt
  - Tie optional
- Khakis or nice trousers
- Finger-tip length skirt
- Flats or heels acceptable

- Suit or sport jacket
- Business dress
- Suit pants or slacks
- Skirts & dresses extend to knee
- Dress shoes (low heels acceptable)



- Dress conservatively.
- Suits are perfect for each situation.
- Make sure your outfit has NO wrinkles.
- Stick with solid colors & simple pattern.
- Keep accessories simple (*one accessory per body part*).
- Wear a belt & watch that match your shoes.
- Trim & groom hair.
- No letters or graphics on clothing.
- Make sure to check for missing buttons, crooked tie, and lint.

# Masculine Measurements

## Suits

### Chest Measurement

Wrap the tape measure around your torso and underneath your arms. Add 1 inch to the total measurement for a more comfortable fit.

### Over Arm Measurement

If your over arm measurement is more than 7 inches larger than your chest measurement, your suit size needs to match your over arm measurement.

## Shirts

### Neck Measurement

Measure around the base of your neck, where a shirt collar normally sits. Take the total circumference and add  $\frac{1}{2}$  inch. This number is your neck size.

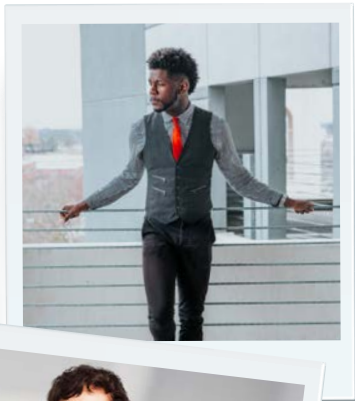
### Sleeve Measurement

Keeping your arm at your side, measure from behind the center of your neck, over the top of your shoulder, down to your wrist.



*Don't hold in your  
breath while measuring.*





Masculine Business Casual



Masculine Business Professional



# Mix & Match Outfit Ideas



*These items are examples, actual items in Clothes Closet will vary.*

## OWL Professional Clothes Closet Masculine Sizes

Jacket/Blazer/Coat		Shirts		Bottoms	
Size	Numeric Size	Size	Numeric Size	Size	Numeric Size
XS	36	XS	33-35 1/2	XS	28
S	38	S	36-38 1/2	S	29-30
M	40	M	39-41 1/2	M	31-33
L	42	L	42-44 1/2	L	34-36
XL	44	XL	45-47 1/2	XL	38-40
XXL	46	XXL	48-50 1/2	XXL	42

*Check Clothes Closet for additional sizes and availability*

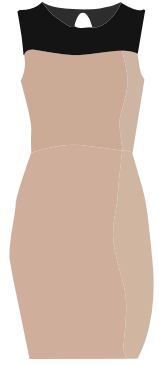
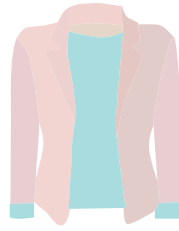


*Feminine Business Casual*

*Feminine Business Professional*



# Mix & Match Outfit Ideas



*These items are examples, actual items in Clothes Closet will vary.*



## OWL Professional Clothes Closet Feminine Sizes

Dresses / Skirts  
Shirts / Pants

Check Clothes Closet  
for additional sizes  
and availability.

Size      Numeric Size

XS      0 - 2

S      4 - 6

M      8 - 10

L      12 - 14

XL      16 - 18

XXL      20 - 22

# OWL Professional Clothes Closet

Boca Raton campus  
SU 80, Rm. 220  
Monday – Friday  
9a.m. – 4p.m.

Davie campus  
LA 109  
By appointment only



FAU Career Center  
[career@fau.edu](mailto:career@fau.edu) | [fau.edu/career](http://fau.edu/career) | 561-297-3533